

Project overview

The site

The proposed Clune Wind Farm is located approximately 5.5km south of Tomatin. The site was chosen because it has good wind resource, few ecological constraints, straightforward access and is close to a viable grid connection. It is also identified in the Highland-Wide Local Development Plan as being an area with potential for wind farm development.

We have removed one turbine from the layout design and revised the remaining turbine locations reducing impacts on sensitive habitats.

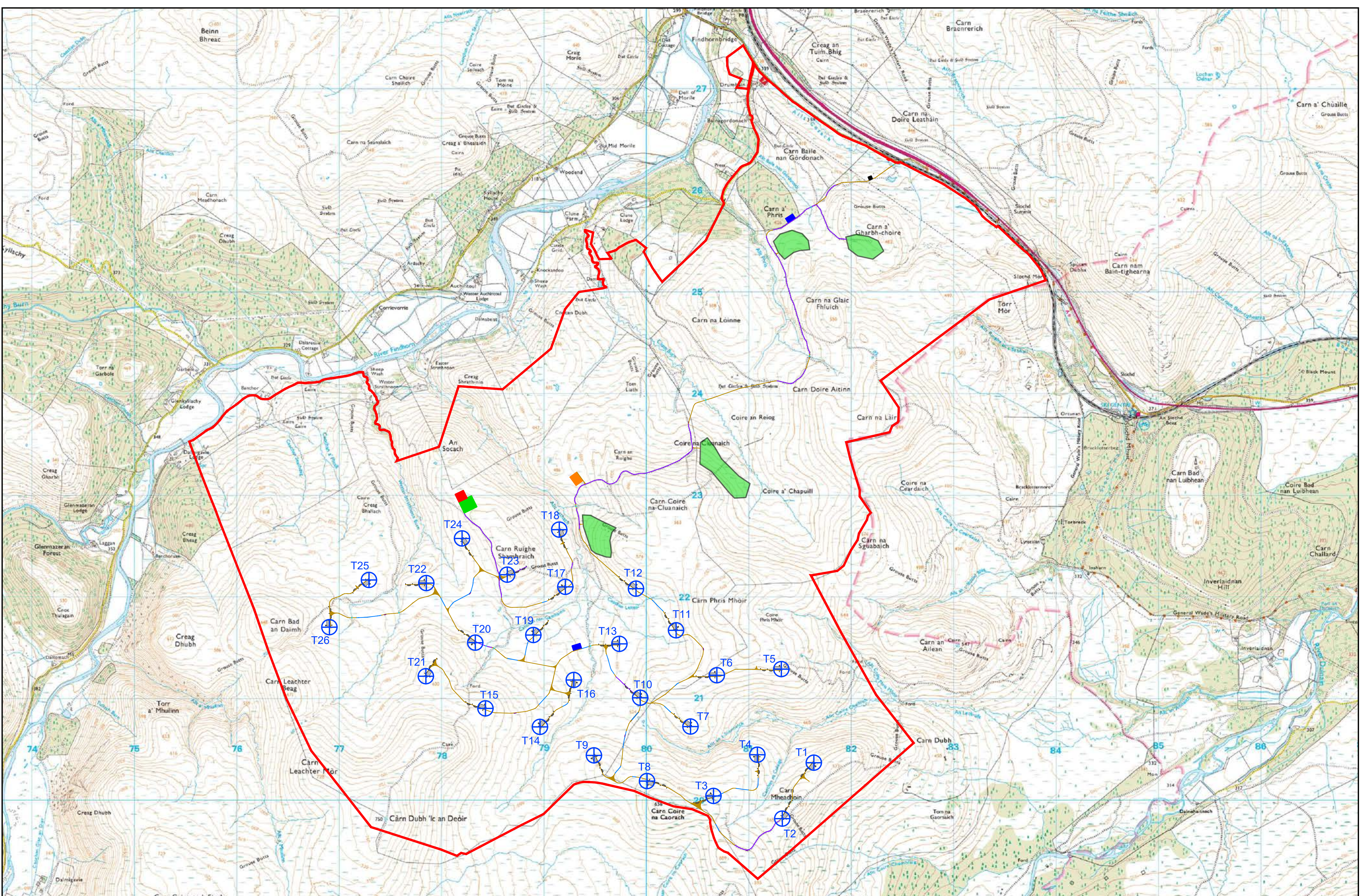
The current design of the wind farm comprises 26 turbines at a turbine tip height of 200m, resulting in an overall installed site generating capacity of 187.2MW. If consented, Clune would be capable of generating clean, low-cost renewable electricity for almost 162,500 homes¹ each year.

Project development

Since the public exhibitions in June 2024, we have completed our detailed site surveys. The findings from this work, together with feedback from the public exhibitions and consultees, has resulted in a number of design changes.

¹ The 162,500 homes equivalent figure has been calculated by taking the predicted annual electricity generation of the site (using the Department for Energy Security and Net Zero (DESNZ) long-term average load factor for [onshore and offshore] wind of 32.08% and RES' predicted site generation capacity of 187.2MW) and dividing this by the annual average electricity figures from DESNZ showing that the annual GB average domestic household consumption is 3,239 kWh (January 2024). Final wind farm capacity will vary depending on the outcome of planning permission and the turbine type selected.

Updated Site Layout Plan



— SITE BOUNDARY ⊕ WIND TURBINE

Clune Wind Farm - updated proposal

www.clune-windfarm.co.uk

RES
power for good