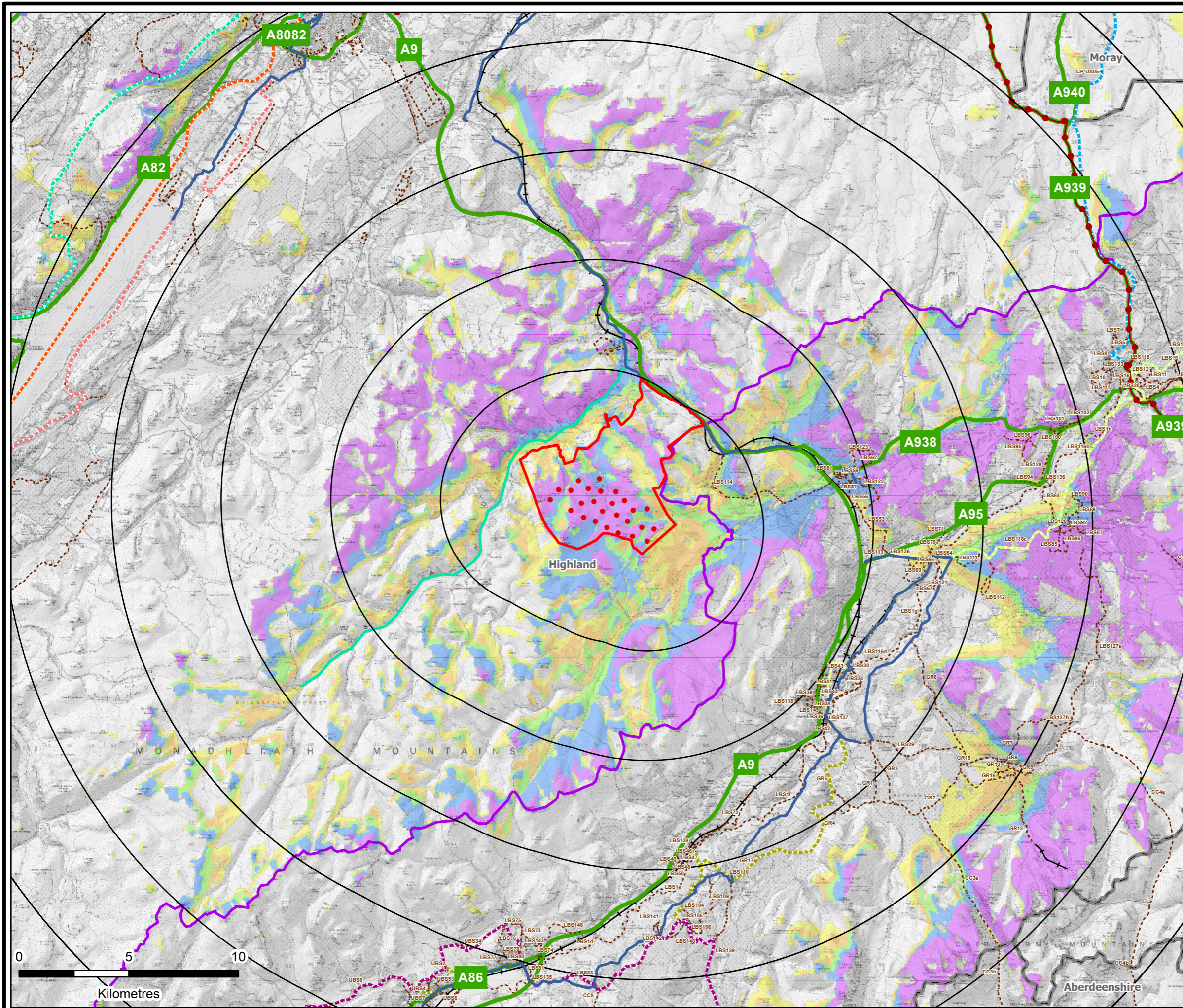




**CLUNE WIND FARM  
EIA REPORT**  
**FIGURE 5.11b  
Principal Visual Receptors  
with ZTV**

**LVIA**

Reproduced from Ordnance Survey digital data © Crown copyright and database rights 2025. All rights reserved. License number AC0000808122. National Cycle Route data supplied by Sustrans contains Ordnance Survey data © Crown copyright and database rights (2024). Contains public sector information licensed under the Open Government Licence v3.0.



- Proposed Turbine Location
- Site Boundary
- 5km Radii
- National Cycle Route
- Core Path
- Railway
- A Road
- C1121
- Scenic Routes
  - Deeside Tourist Route
  - Highland Tourist Route
  - North Coast 500
  - Moray Firth Route
  - North East 250
  - Long Distance Trails
    - Dava Way
- East Highland Way
- Great Glen Canoe Trail
- Great Glen Way
- Scottish National Trail
- South Loch Ness Trail
- Speyside Way
- Council Boundary
- Cairngorms National Park
- Number of Blade Tips Theoretically Visible
  - 1 - 5
  - 6 - 10
  - 11 - 16
  - 17 - 23
  - 24 - 26

Blade Tip:	200m	Observer height:	2m
DTM:	OS T50 DTM	Surface features:	Excluded
DTM resolution:	50m	Earth curvature:	Included



LAYOUT DWG: TBC T-LAYOUT NO: PSCOCLU041

DRAWING NUMBER: 405.064807.00001.0066.0

SCALE - 1:170,000@ A3

**ENVIRONMENTAL IMPACT ASSESSMENT  
REPORT 2025**

THIS DRAWING IS THE PROPERTY OF RENEWABLE ENERGY SYSTEMS LTD. AND NO REPRODUCTION MAY BE MADE IN WHOLE OR IN PART WITHOUT PERMISSION