

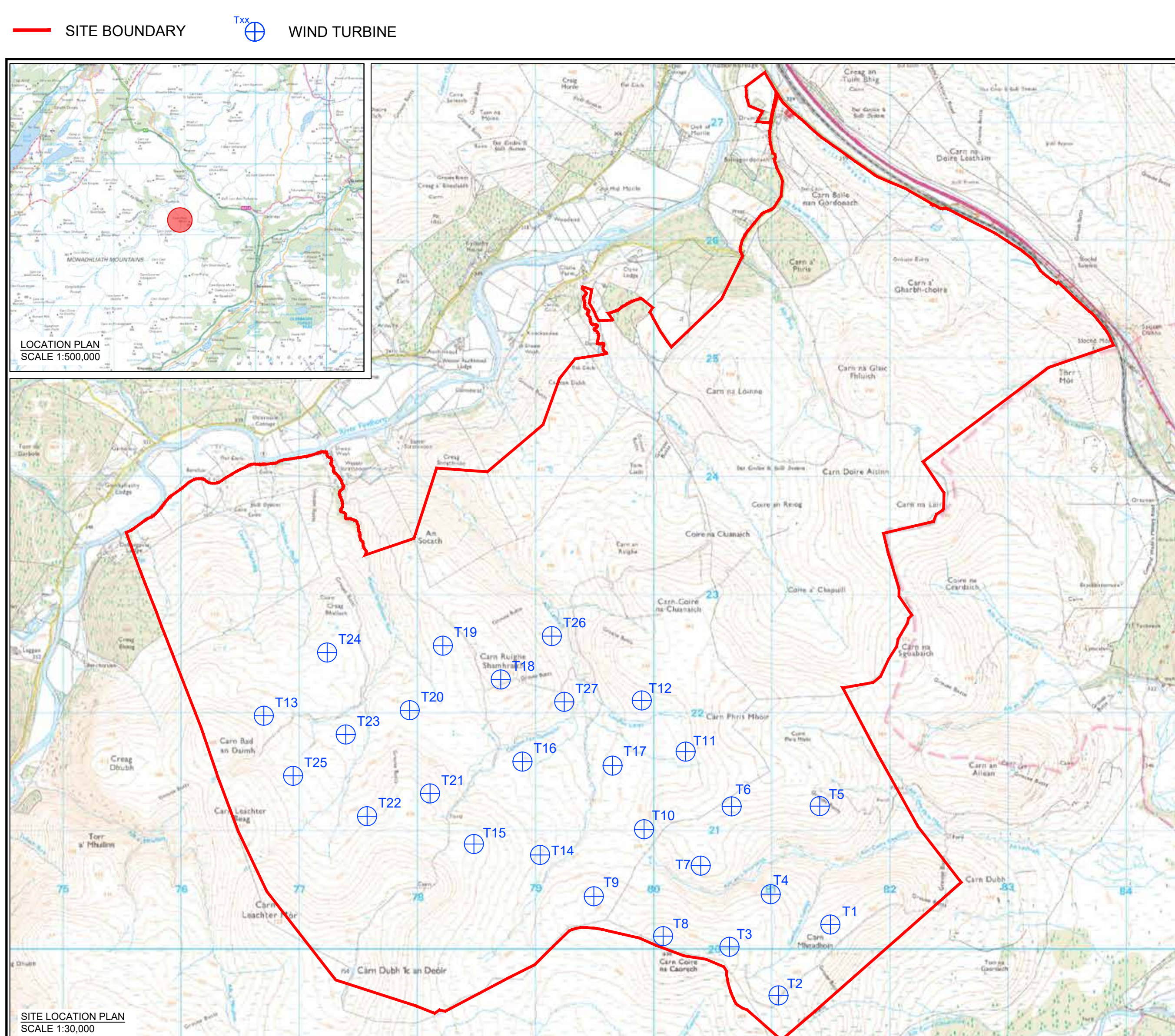
Project overview

The drawing shows the proposed site layout at this early stage of the project.

The site

The proposed Clune Wind Farm is located approximately 5.5km south of Tomatin.

The site was chosen because it has good wind resource, few ecological constraints, straightforward access and is close to a viable grid connection. It is also identified in the Highland-Wide Local Development Plan as being an area with potential for wind farm development.



Early design

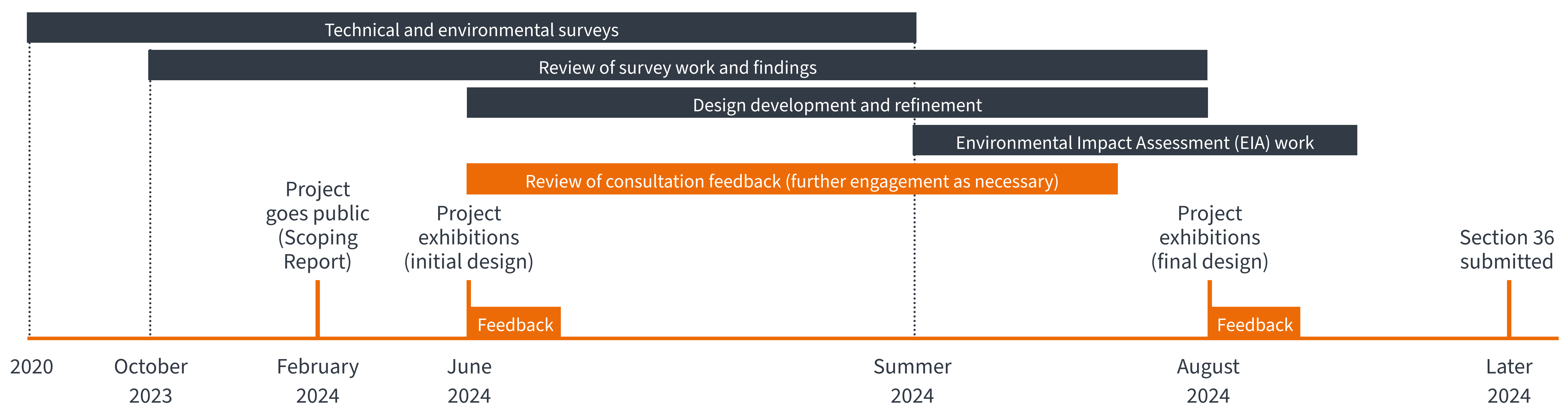
In February 2024, we submitted a Scoping Report to the Scottish Government's Energy Consents Unit (ECU) which sets out and seeks feedback on the proposed scope of environmental assessment work. Consultee feedback to the Scoping Report continues to be reviewed and any necessary changes made to the proposed scope of environmental and technical work.

Based on our initial studies, the wind farm would comprise up to 27 turbines at a turbine tip height of 200m, resulting in an overall installed site generating capacity (based on the scoping layout) of around 194.4MW.

Turbine technology has advanced considerably in recent years, meaning that turbines are now more efficient, which enables them to generate a significantly greater amount of renewable electricity per turbine. If consented, Clune would be capable of generating clean, low-cost renewable electricity for around 168,500 homes¹ each year.

¹ The 168,500 homes equivalent figure has been calculated by taking the predicted annual electricity generation of the site (using the Department for Energy Security and Net Zero (DESNZ) long-term average load factor for [onshore and offshore] wind of 32.08% and RES' predicted site generation capacity of 194.4MW) and dividing this by the annual average electricity figures from DESNZ showing that the annual GB average domestic household consumption is 3,239 kWh (January 2024). Final wind farm capacity will vary depending on the outcome of planning permission and the turbine type selected.

Indicative timeline



Clune Wind Farm Proposal

www.clune-windfarm.co.uk

RES
power for good