

# Welcome to our public consultation

**Thank you for taking the time to attend this exhibition. We are seeking your views on the preliminary design for a wind farm proposal that we are exploring on the Clune Estate and Seafield Estate, approximately 5.5km south of Tomatin in the Highlands.**

RES believes in meaningful and effective consultation, and we aim to engage early with the local community and key stakeholders in order to facilitate constructive consultation. This helps to identify issues and concerns, as well as benefits and opportunities, which we will consider when developing and refining the design and delivery of the proposal.

This exhibition forms part of our pre-application consultation. We have provided a range of information, including details of the site location, design layout, proposed infrastructure, site constraints, likely turbine delivery route and environmental considerations.

In addition, we have provided visualisations comprising wirelines and photomontages to help give an impression of how the current site design and layout may appear from different viewpoints in the area.

We consider pre-application consultation a crucial part of the wind farm development process.

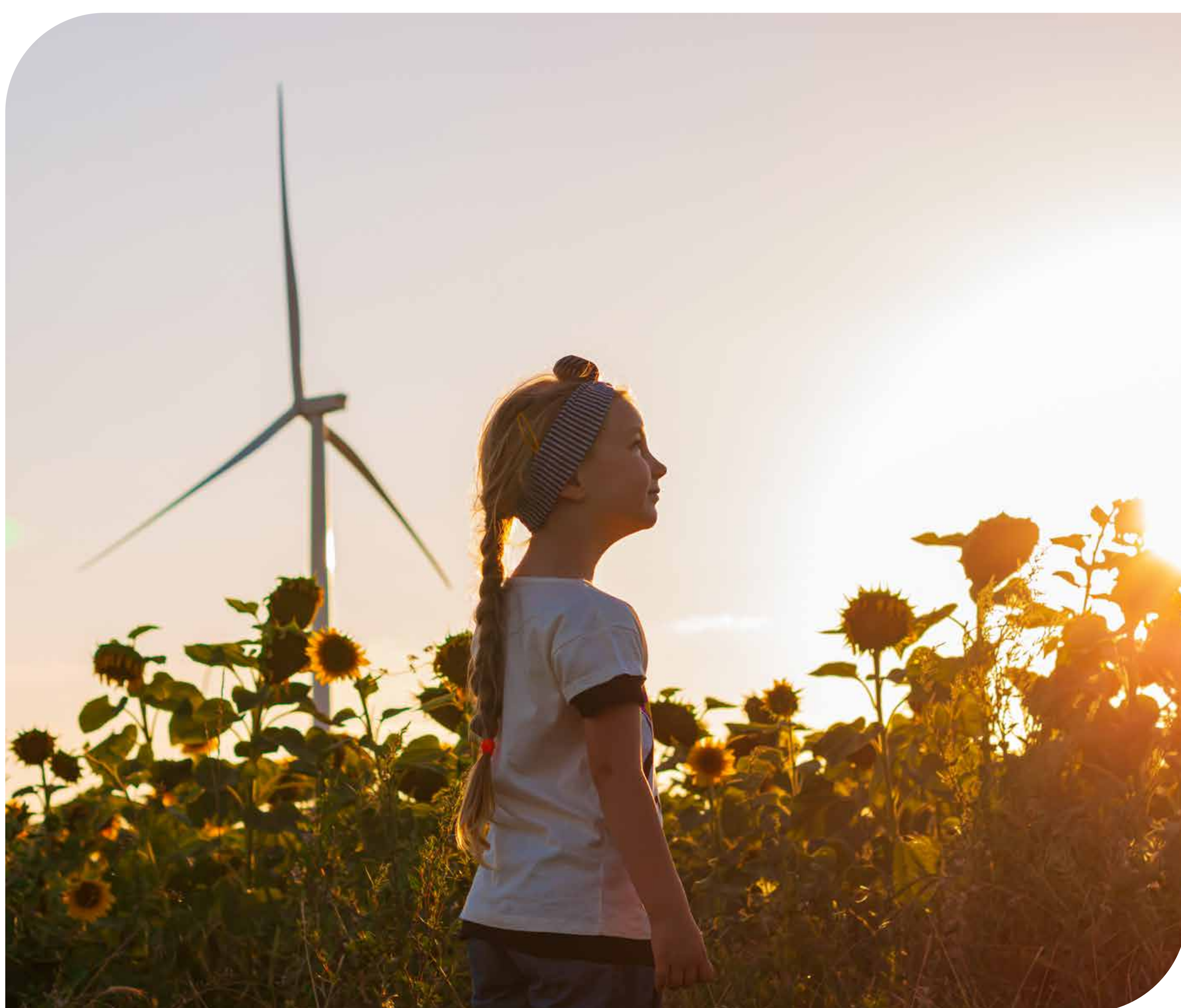
This early-stage exhibition is designed to give you the opportunity to:

- learn more about the proposal
- discuss any questions or views with our project team
- provide written feedback to RES on the proposal.

**Please take time to read the exhibition information provided and talk to our project team about any questions that you may have. All consultation feedback submitted to RES will be reviewed by the project team over the coming months as we continue the design process.**

## Planning submission timescales

The Clune Wind Farm proposal will have an installed generating capacity greater than 50MW (megawatts). This means that the application for planning consent will be submitted by RES to the Scottish Government's Energy Consents Unit under Section 36 of the Electricity Act 1989 (the Electricity Act) and determined by Scottish Ministers. We currently expect to submit the Section 36 application later in 2024.



## Clune Wind Farm Proposal

[www.clune-windfarm.co.uk](http://www.clune-windfarm.co.uk)

**RES**  
power for good