

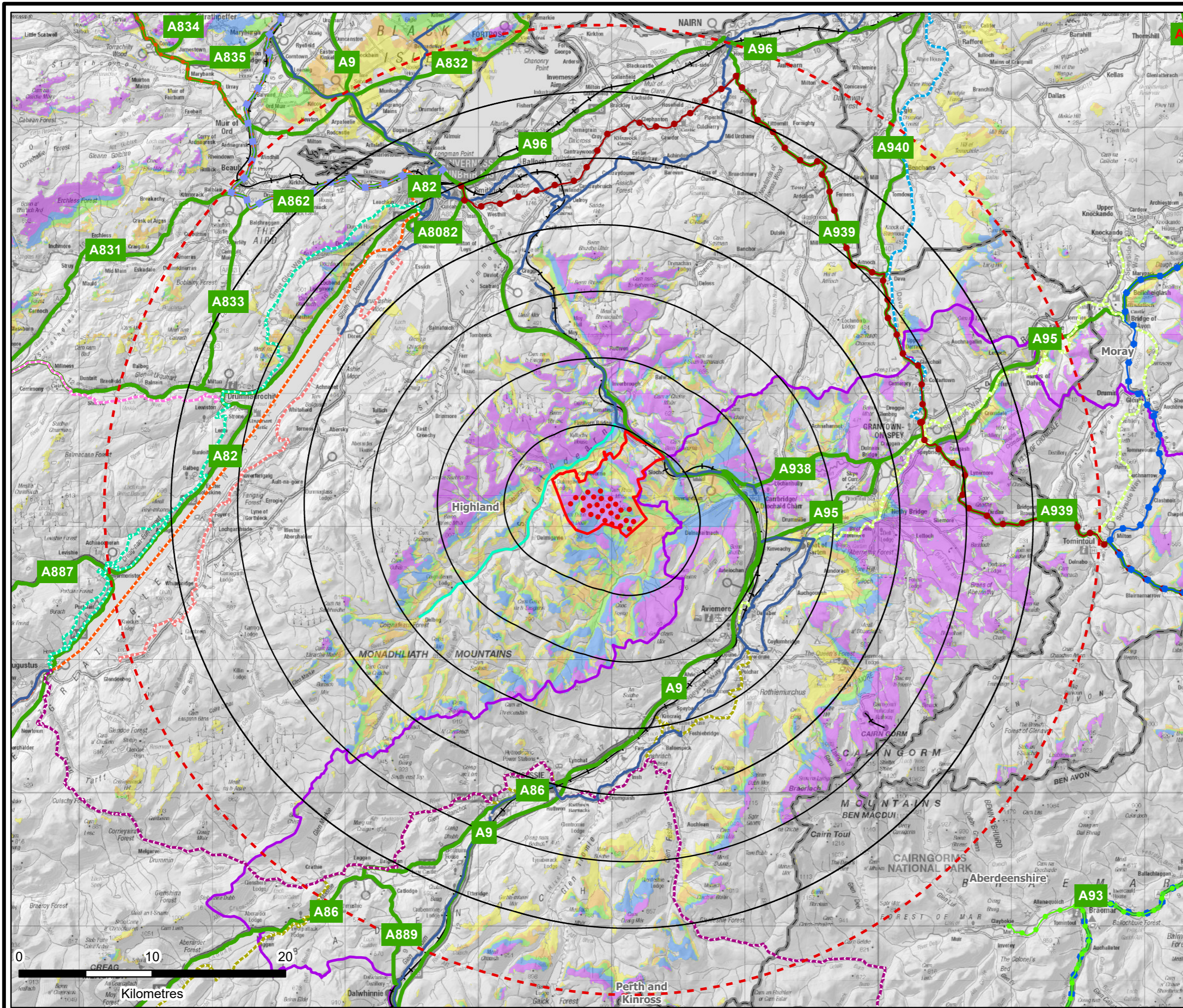


CLUNE WIND FARM EIA REPORT

FIGURE 5.11a Principal Visual Receptors with ZTV

LVIA

Reproduced from Ordnance Survey digital data © Crown copyright and database rights 2025. All rights reserved. License number AC000808122. National Cycle Route data supplied by Sustrans contains Ordnance Survey data © Crown copyright and database rights (2024). Contains public sector information licensed under the Open Government Licence v3.0.



- Proposed Turbine Location
- Site Boundary
- 5km Radii
- 35km Study Area
- National Cycle Route
- Railway
- A Road
- C1121
- Scenic Routes
- Deeside Tourist Route
- Highland Tourist Route
- North Coast 500
- Moray Firth Route
- North East 250
- Long Distance Trails
- Affric Kintail
- Dava Way
- East Highland Way
- Great Glen Canoe Trail
- Great Glen Way
- Scottish National Trail
- South Loch Ness Trail
- Speyside Way
- Council Boundary
- Cairngorms National Park
- Number of Blade Tips Theoretically Visible
- 1 - 5
- 6 - 10
- 11 - 16
- 17 - 23
- 24 - 26

Blade Tip:	200m	Observer height:	2m
DTM:	OS T50 DTM	Surface features:	Excluded
DTM resolution:	50m	Earth curvature:	Included



LAYOUT DWG: TBC T-LAYOUT NO: PSCOCLU041

DRAWING NUMBER: 405.064807.00001.0065.0

SCALE - 1:280,000@ A3

ENVIRONMENTAL IMPACT ASSESSMENT
REPORT 2025

THIS DRAWING IS THE PROPERTY OF RENEWABLE ENERGY SYSTEMS LTD. AND NO REPRODUCTION MAY BE MADE IN WHOLE OR IN PART WITHOUT PERMISSION