

**CLUNE WIND FARM
EIA REPORT
FIGURE 5.27
Viewpoint Plan
VP11: Carn a' Choir Mhoir
Summit
LVIA**

Reproduced from Ordnance Survey digital data © Crown copyright and database rights 2025. All rights reserved. License number AC0000808122. Contains public sector information licensed under the Open Government Licence v3.0. Maxar, Microsoft

- Proposed Turbine Location
 - ▭ Site Boundary
 - 5km Radii
 - 35km Study Area
 - ⊙ Viewpoint
- Cumulative Wind Turbines
- Operational
 - Under Construction
 - Consented
 - Appeal / Application
 - Scoping
- ▭ Cairngorms National Park
 - ▭ Council Boundary
 - ▭ Photomontage and Wireline (53.5° HFOV)
 - ▭ Panorama with Wireline (90° HFOV)
- Number of Blade Tips Theoretically Visible
- 1 - 5
 - 6 - 10
 - 11 - 16
 - 17 - 23
 - 24 - 26

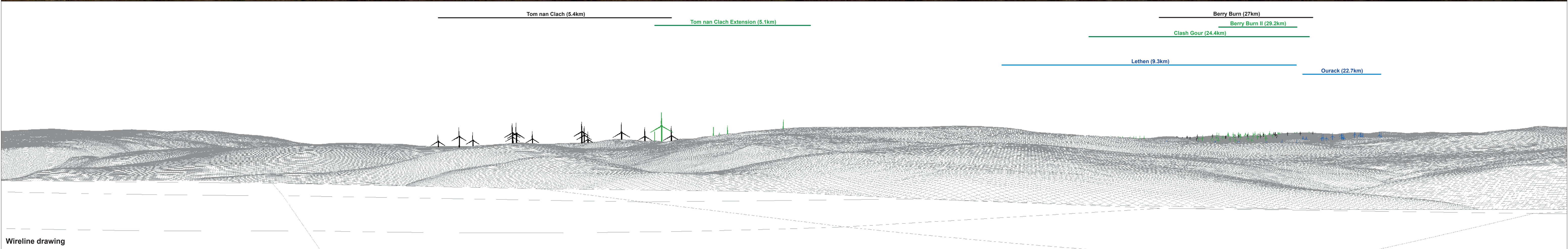
LAYOUT OWN: TBC | LAYOUT NO: PSC00LU041

DRAWING NUMBER: **405.064807.00001.0072.0**

**ENVIRONMENTAL IMPACT ASSESSMENT
REPORT 2025**

THIS DRAWING IS THE PROPERTY OF RENEWABLE ENERGY SYSTEMS LTD. AND NO REPRODUCTION MAY BE MADE IN WHOLE OR IN PART WITHOUT PERMISSION

Observer height:	2m
Blade Tip:	200m
DTM:	OS 150 DTM
DTM resolution:	50m
Surface features:	Excluded
Earth curvature:	Included



OS reference: 284269 E 829054 N	Horizontal field of view: 90° (cylindrical projection)	Camera: Canon EOS 6D Mark II	Reproduced from Ordnance Survey digital data © Crown copyright and database rights 2025. All rights reserved. Licence number AC0000808122.
Eye level: 628.28 m AOD	Principal distance: 522 mm	Lens: EF50mm f/1.4 USM	
Direction of view: 31°	Paper size: 841 x 297 mm (half A1)	Camera height: 1.5 m AGL	
Nearest turbine: 8.2 km	Correct printed image size: 820 x 130 mm	Date and time: 03/10/2024, 09:42:43	

Figure: 5.27.b
Viewpoint 11: Carn a' Choire Mhoir Summit



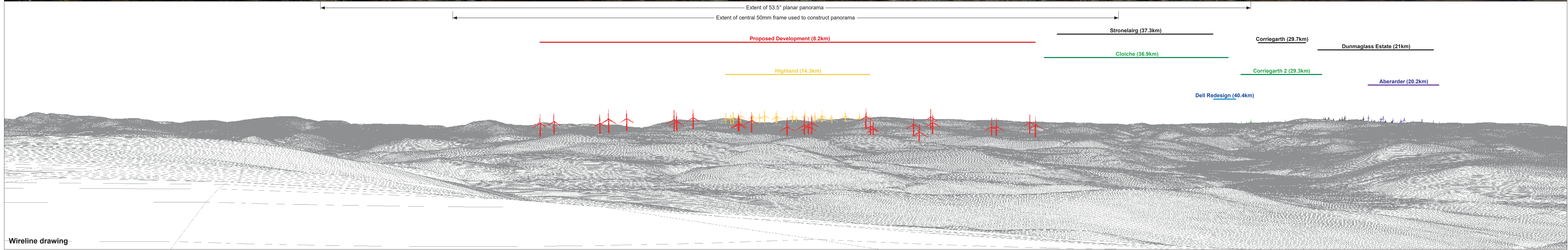
Baseline photograph

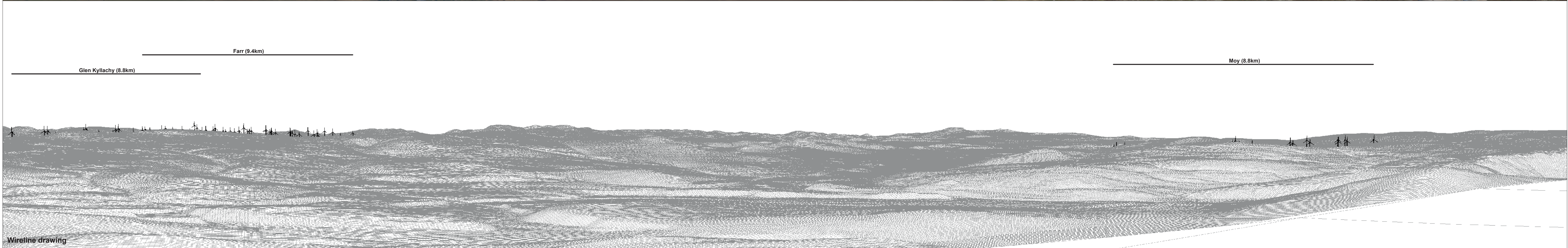
This image provides landscape and visual context only



Wireline drawing

<p>OS reference: 284269 E 829054 N Eye level: 628.28 m AOD Direction of view: 121° Nearest turbine: 8.2 km</p>	<p>Horizontal field of view: 90° (cylindrical projection) Principal distance: 522 mm Paper size: 841 x 297 mm (half A1) Correct printed image size: 820 x 130 mm</p>	<p>Camera: Canon EOS 6D Mark II Lens: EF50mm f/1.4 USM Camera height: 1.5 m AGL Date and time: 03/10/2024, 09:42:43</p>	<p>Reproduced from Ordnance Survey digital data © Crown copyright and database rights 2025. All rights reserved. Licence number AC0000808122.</p>	<p>Figure: 5.27.c Viewpoint 11: Carn a' Choire Mhoir Summit</p>
---	---	--	---	--





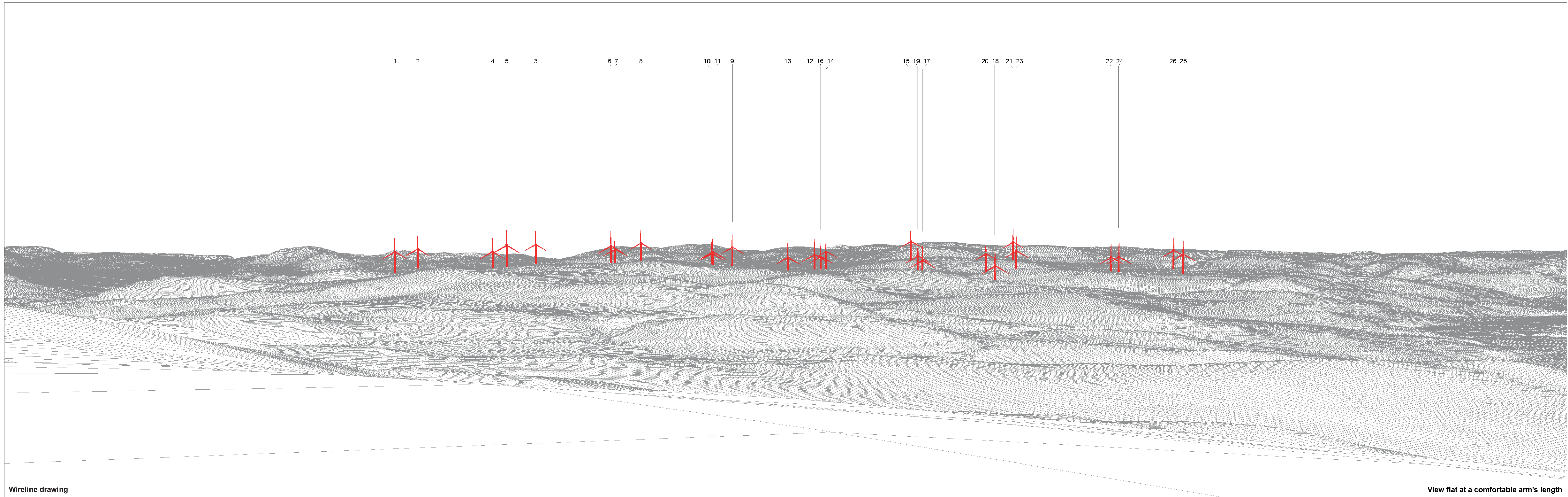
OS reference: 284269 E 829054 N
 Eye level: 628.28 m AOD
 Direction of view: 301°
 Nearest turbine: 8.2 km

Horizontal field of view: 90° (cylindrical projection)
 Principal distance: 522 mm
 Paper size: 841 x 297 mm (half A1)
 Correct printed image size: 820 x 130 mm

Camera: Canon EOS 6D Mark II
 Lens: EF50mm f/1.4 USM
 Camera height: 1.5 m AGL
 Date and time: 03/10/2024, 09:42:43

Reproduced from Ordnance Survey digital data © Crown copyright and database rights 2025. All rights reserved. Licence number AC0000808122.

Figure: 5.27.e
 Viewpoint 11: Carn a' Choire Mhoir Summit



Wireline drawing

View flat at a comfortable arm's length

OS reference: 284269 E 829054 N
 Eye level: 628.28 m AOD
 Direction of view: 211°
 Nearest turbine: 8.2 km

Horizontal field of view: 53.5° (planar projection)
 Principal distance: 812.5 mm
 Paper size: 841 x 297 mm (half A1)
 Correct printed image size: 820 x 260 mm

Camera: Canon EOS 6D Mark II
 Lens: EF50mm f/1.4 USM
 Camera height: 1.5 m AGL
 Date and time: 03/10/2024, 09:42:43

Reproduced from Ordnance Survey digital data © Crown copyright and database rights 2025. All rights reserved. Licence number AC0000808122.

Figure: 5.27.f
 Viewpoint 11: Carn a' Choire Mhoir Summit



Baseline photograph

View flat at a comfortable arm's length

OS reference: 284269 E 829054 N	Horizontal field of view: 53.5° (planar projection)	Camera: Canon EOS 6D Mark II	Reproduced from Ordnance Survey digital data © Crown copyright and database rights 2025. All rights reserved. Licence number AC0000808122.
Eye level: 628.28 m AOD	Principal distance: 812.5 mm	Lens: EF50mm f/1.4 USM	
Direction of view: 211°	Paper size: 841 x 297 mm (half A1)	Camera height: 1.5 m AGL	
Nearest turbine: 8.2 km	Correct printed image size: 820 x 260 mm	Date and time: 03/10/2024, 09:42:43	

Figure: 5.27.g
Viewpoint 11: Carn a' Choire Mhoir Summit



Photo montage

View flat at a comfortable arm's length

OS reference: 284269 E 829054 N	Horizontal field of view: 53.5° (planar projection)	Camera: Canon EOS 6D Mark II	Reproduced from Ordnance Survey digital data © Crown copyright and database rights 2025. All rights reserved. Licence number AC0000808122.
Eye level: 628.28 m AOD	Principal distance: 812.5 mm	Lens: EF50mm f/1.4 USM	
Direction of view: 211°	Paper size: 841 x 297 mm (half A1)	Camera height: 1.5 m AGL	
Nearest turbine: 8.2 km	Correct printed image size: 820 x 260 mm	Date and time: 03/10/2024, 09:42:43	

Figure: 5.27.h
Viewpoint 11: Carn a' Choire Mhoir Summit