

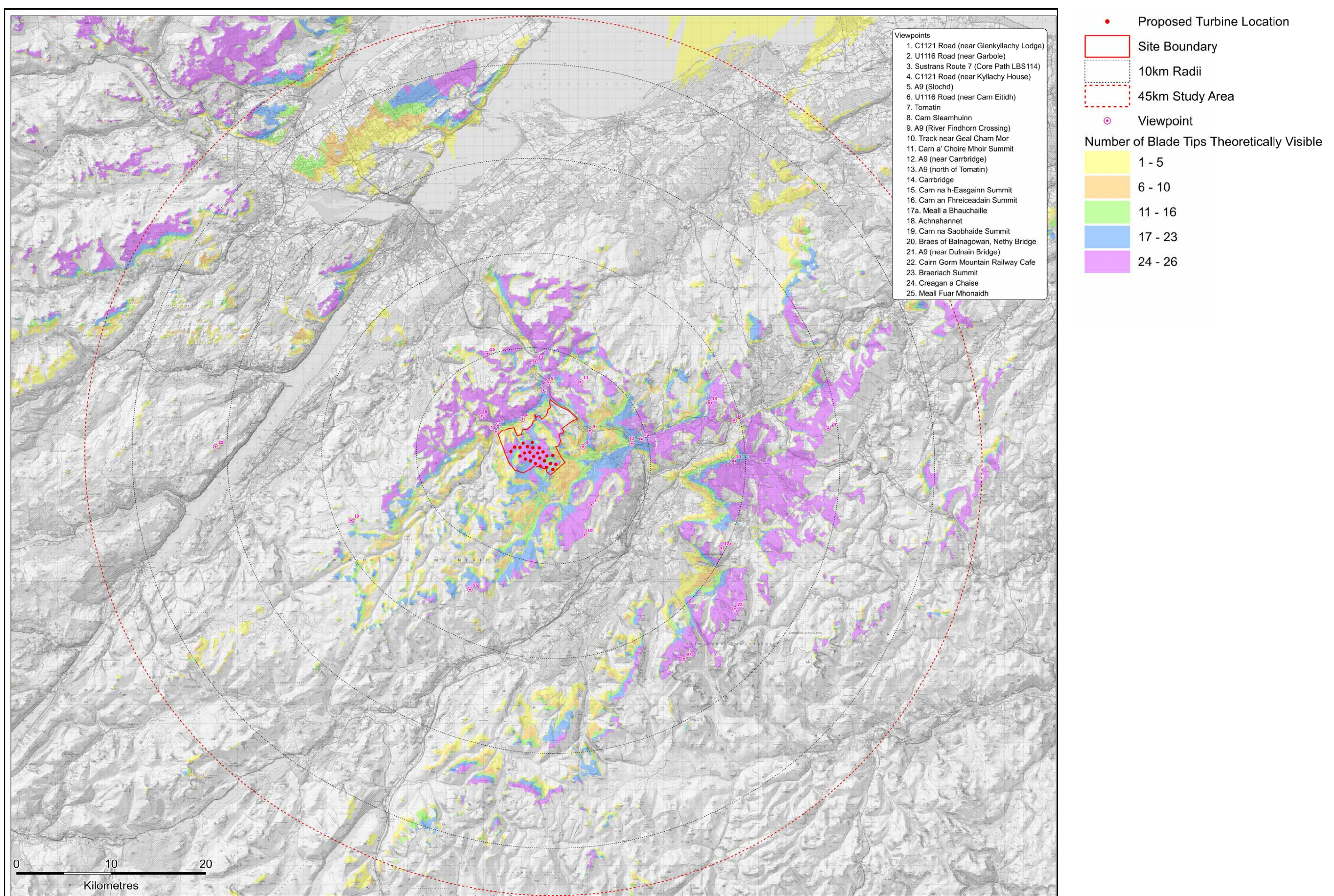
Landscape and visual

Tip height Zone of Theoretical Visibility (ZTV) – 45km

The ZTV map below illustrates the theoretical extent of where turbines will be visible from within the wider area, assuming 100% visibility and bare landform (without any trees, buildings or obstacles in the view) as per NatureScot guidance. The visibility will be much less extensive in reality. We are looking to achieve a design that strikes an acceptable balance between the visibility of the proposal and its ability to generate significant amounts of renewable energy. Ultimately, the acceptability of this design will be assessed by the Scottish Ministers in relation to current energy policy and planning requirements.

Our landscape architects have undertaken extensive assessment work to inform the design development and turbine layout. Key changes (since the scoping design) include the reduction in turbine numbers from 27 to 26 and the movement of each wind turbine location to varying degrees to refine the design and minimise impacts wherever possible.

The photomontages presented at this exhibition have been prepared to NatureScot guidance and help to give an impression of what the proposal could look like from different viewpoints surrounding the site.



Clune Wind Farm - updated proposal

www.clune-windfarm.co.uk

RES
power for good