

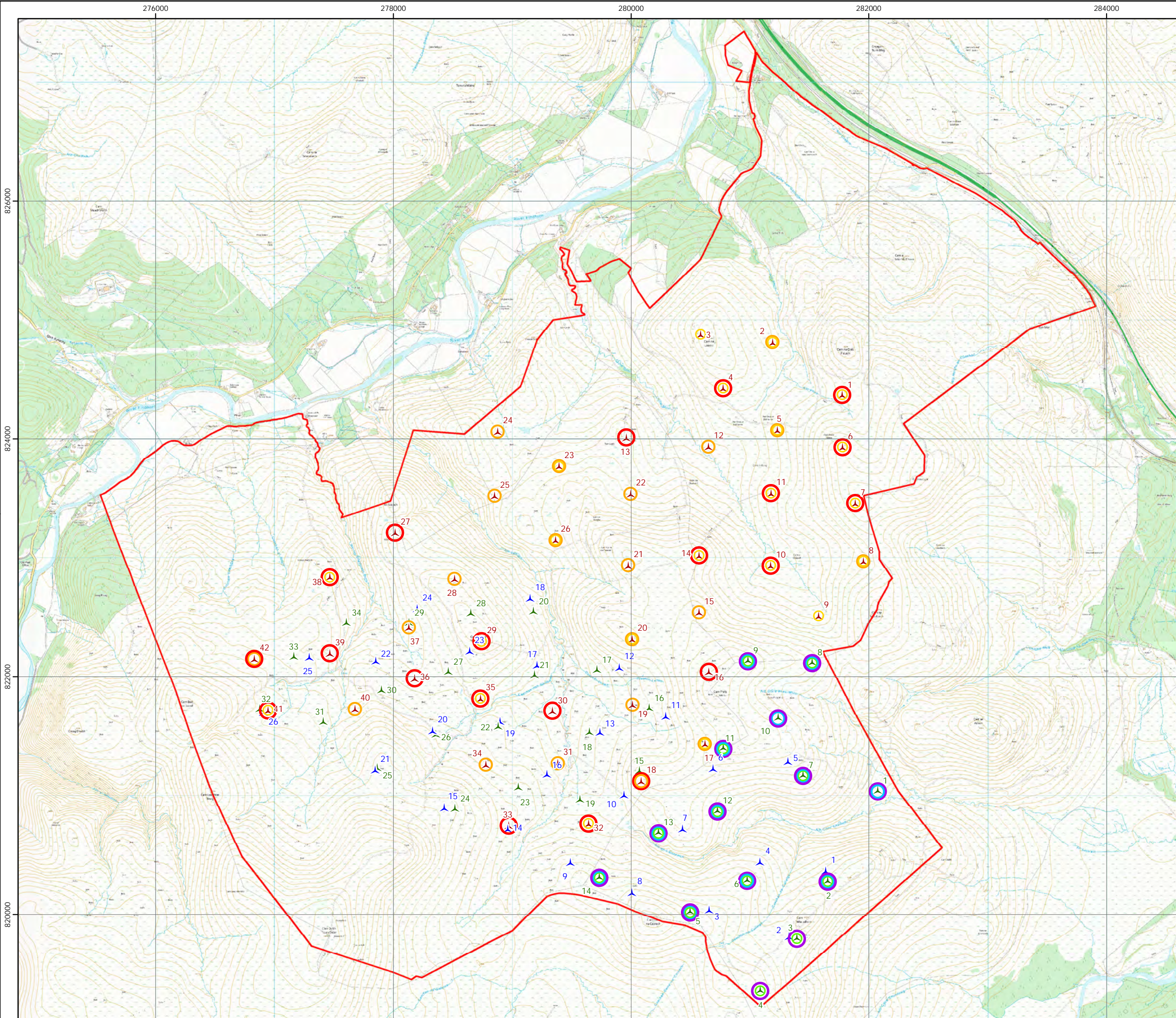
# Clune Wind Farm



Figure 7.2.2  
Bat Detectors and Site Layout

**Key**

- Site boundary
  - ▲ Initial layout (2022)
  - ▲ Interim layout (2023)
  - ▲ Final layout
- Bat Static Locations**
- Spring 2022
  - Summer 2022
  - Autumn 2022
  - Spring 2023
  - Summer 2023
  - Autumn 2023



Scale @ A3:  
1:30,000



© Crown copyright 2024. All rights reserved.  
Ordnance survey licence number 100031673.



# Clune Wind Farm



Figure 7.2.3a  
Bat Activity Survey Results  
Spring (Myotis sp.)

### Key

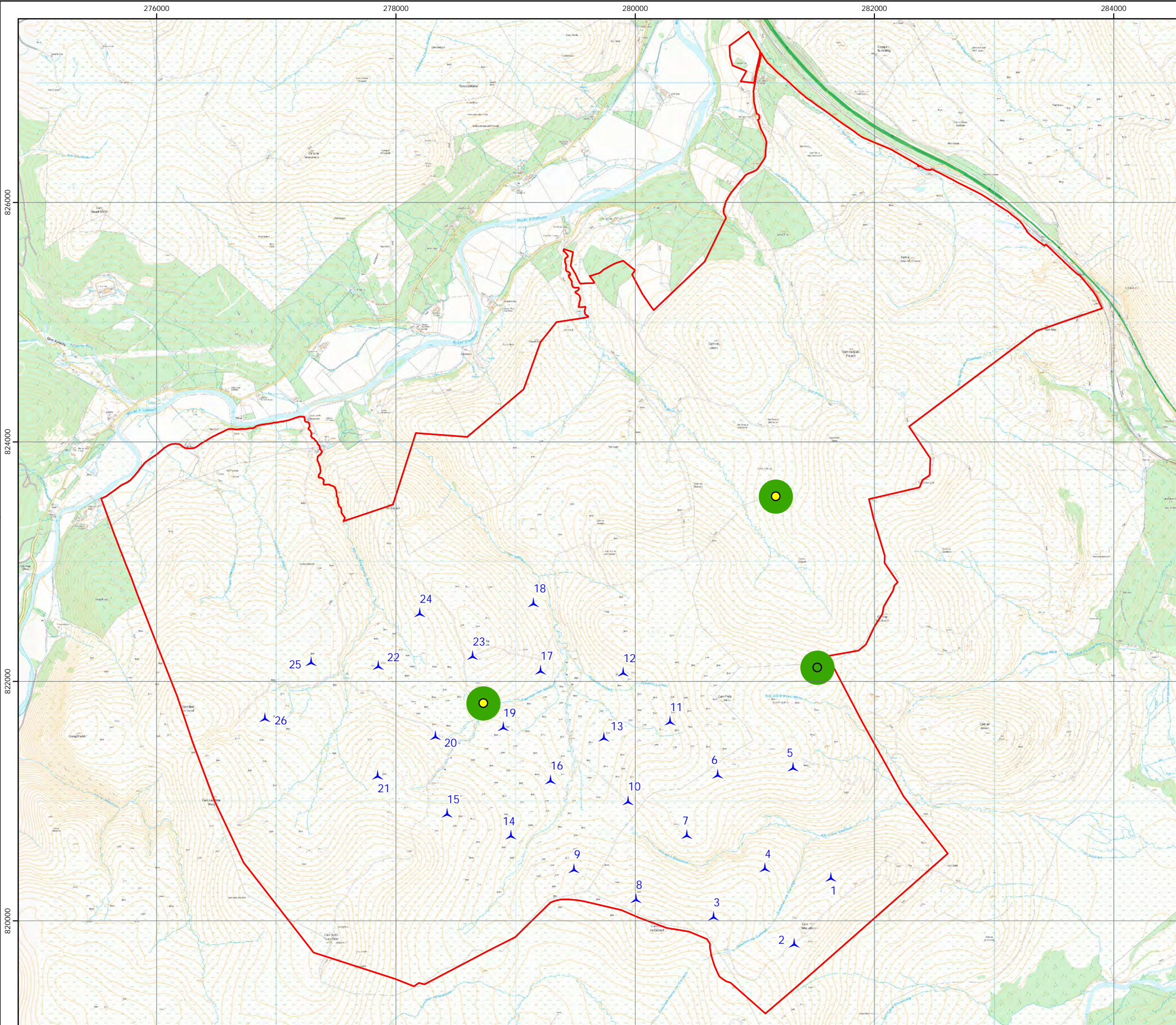
- Site boundary
- Proposed turbines

### Bat passes per hour

- < 0.012
- 0.012
- > 0.012

### Median passes per hour

- < 1
- 1
- > 1



0 0.5 1 2

Kilometres



Scale @ A3:  
1:30,000



© Crown copyright 2024. All rights reserved.  
Ordnance survey licence number 100031673.



# Clune Wind Farm



Figure 7.2.3b  
Bat Activity Survey Results  
Spring (Common Pipistrelle)

### Key

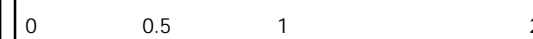
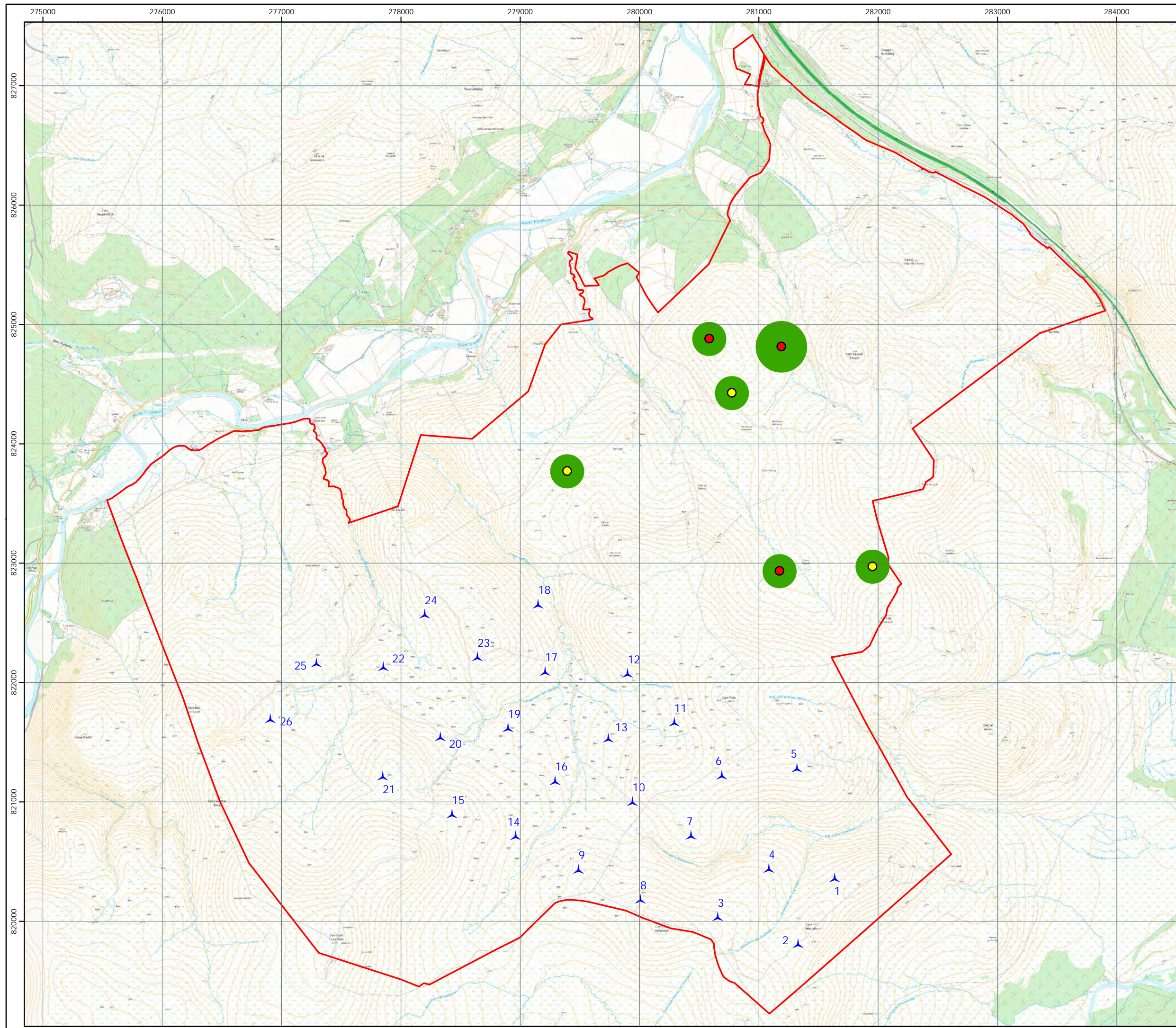
- Site boundary
- Proposed turbines

### Bat passes per hour

- < 0.012
- 0.012
- > 0.012

### Median passes per hour

- < 1
- 1
- > 1



Scale @ A3:  
1:30,000



© Crown copyright 2024. All rights reserved.  
Ordnance survey licence number 100031673.



# Clune Wind Farm



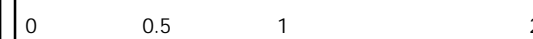
Figure 7.2.3c  
Bat Activity Survey Results  
Spring (Soprano Pipistrelle)

**Key**

- Site boundary
- ▲ Proposed turbines
- Bat passes per hour**
- < 0.012
- 0.012
- > 0.012

**Median passes per hour**

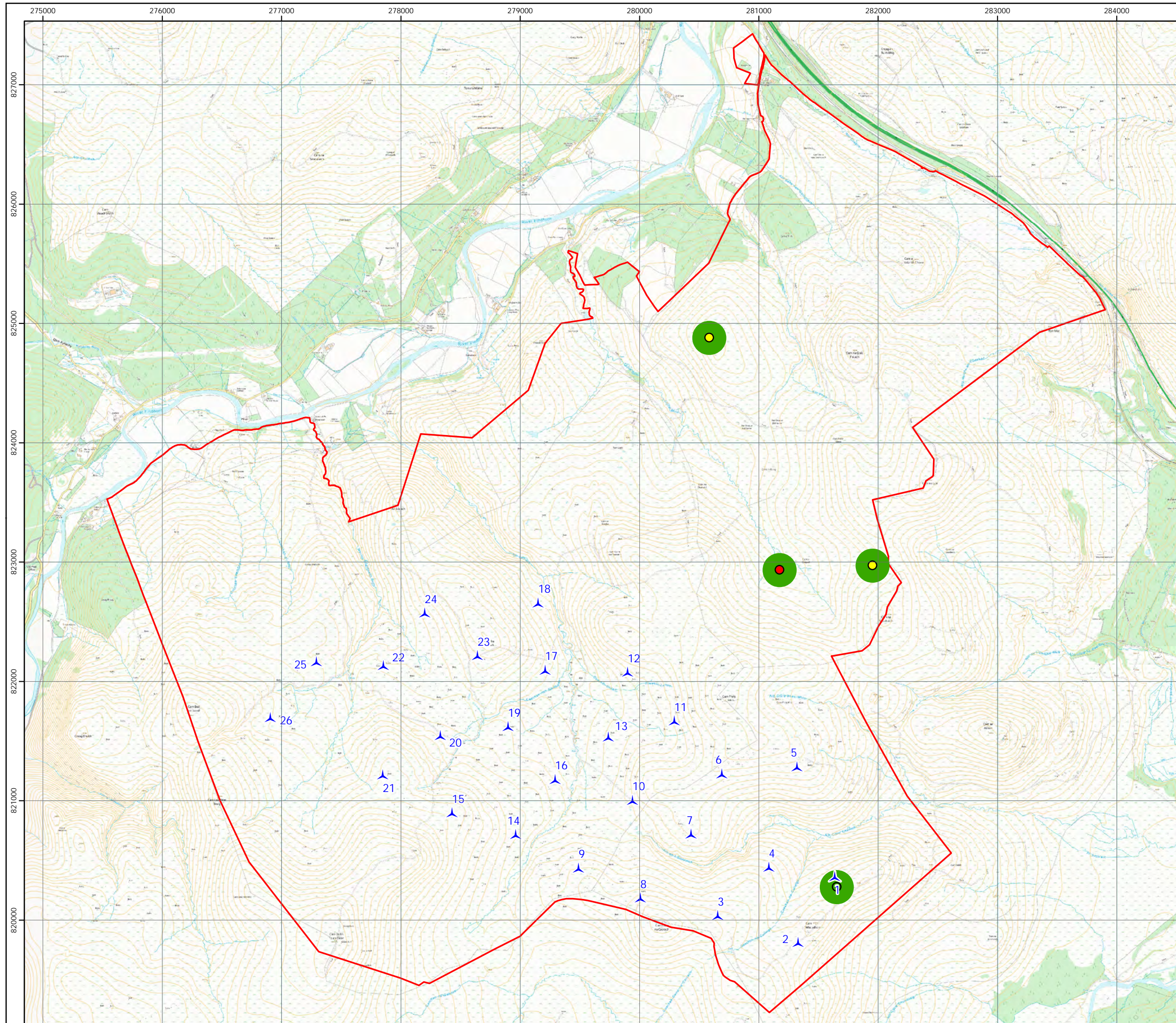
- < 1
- 1
- > 1



Scale @ A3:  
1:30,000



© Crown copyright 2024. All rights reserved.  
Ordnance survey licence number 100031673.





# Clune Wind Farm



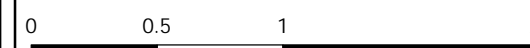
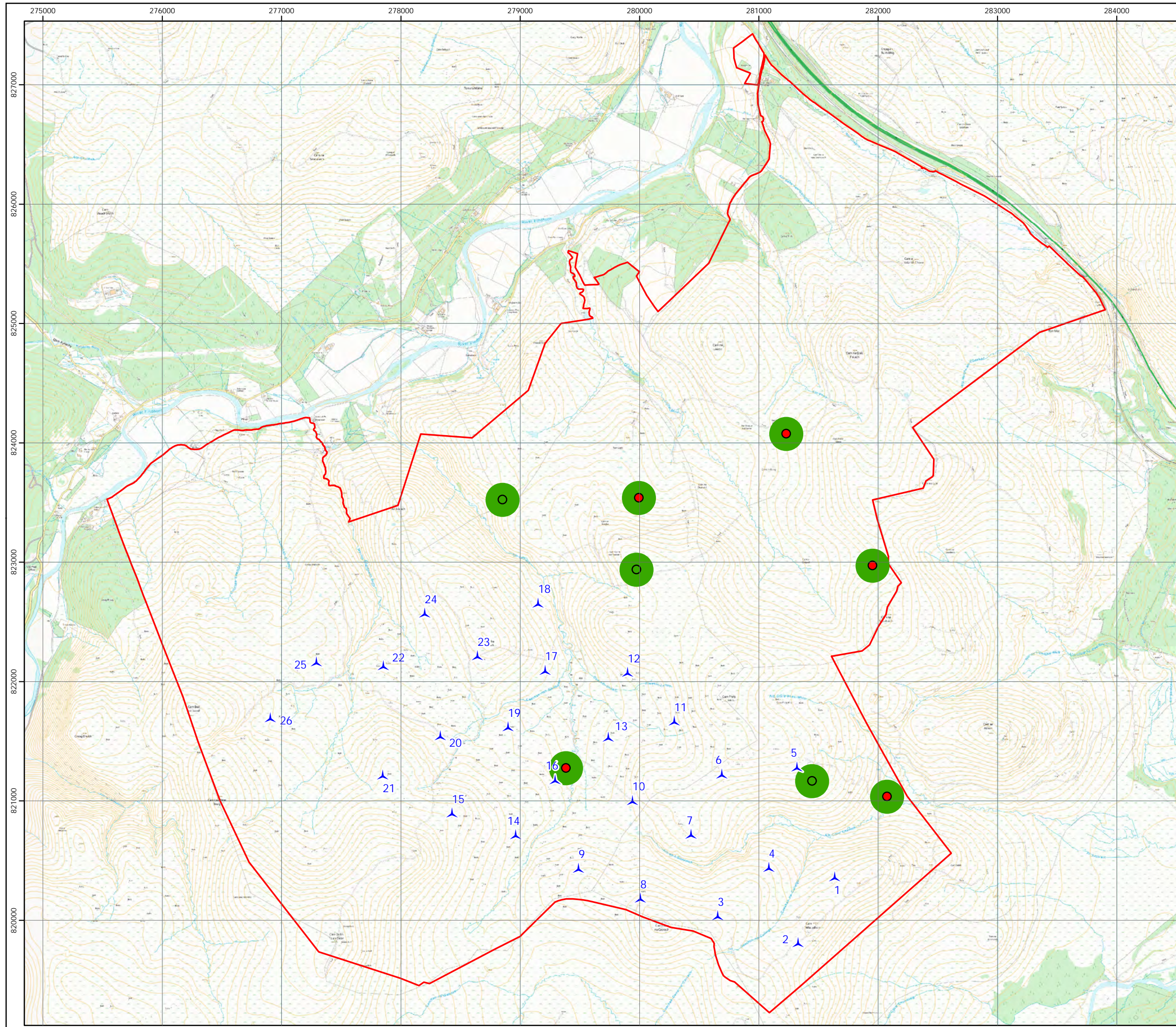
Figure 7.2.4a  
Bat Activity Survey Results  
Summer (Myotis sp.)

**Key**

- Site boundary
- ▲ Proposed turbines
- Bat passes per hour**
- < 0.012
- 0.012
- > 0.012

**Median passes per hour**

- < 1
- 1
- > 1



Scale @ A3:  
1:30,000



© Crown copyright 2024. All rights reserved.  
Ordnance survey licence number 100031673.



# Clune Wind Farm



Figure 7.2.4b  
Bat Activity Survey Results  
Summer (Common Pipistrelle)

**Key**

Site boundary

Proposed turbines

**Bat passes per hour**

< 0.012

0.012

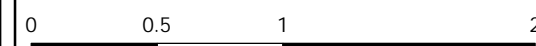
> 0.012

**Median passes per hour**

< 1

1

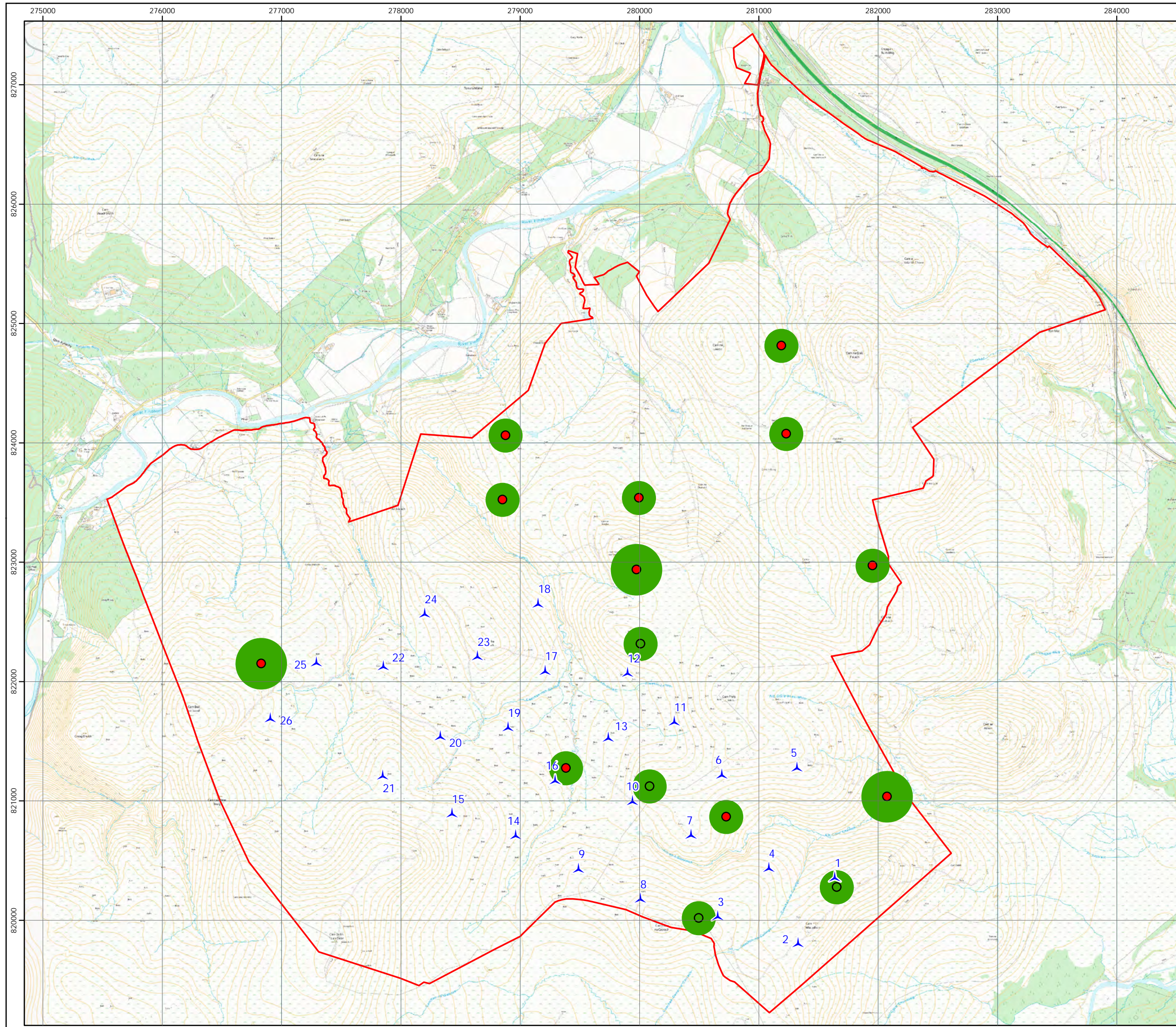
> 1



Scale @ A3:  
1:30,000



© Crown copyright 2024. All rights reserved.  
Ordnance survey licence number 100031673.





# Clune Wind Farm



Figure 7.2.4c  
Bat Activity Survey Results  
Summer (Soprano Pipistrelle)

**Key**

Site boundary

Proposed turbines

**Bat passes per hour**

< 0.012

0.012

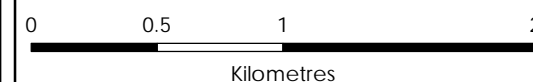
> 0.012

**Median passes per hour**

< 1

1

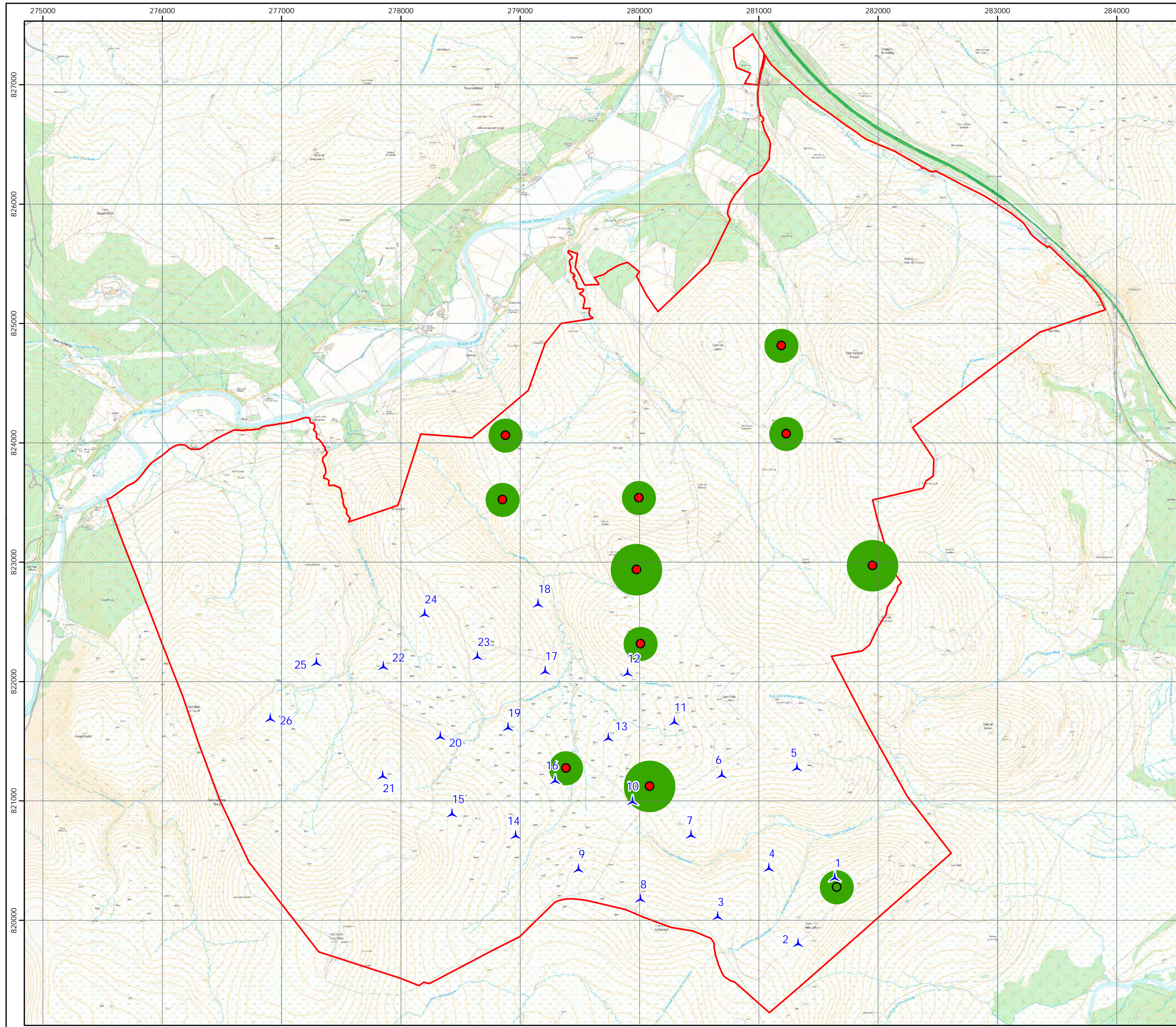
> 1



Scale @ A3:  
1:30,000



© Crown copyright 2024. All rights reserved.  
Ordnance survey licence number 100031673.





# Clune Wind Farm



Figure 7.2.4d  
Bat Activity Survey Results  
Summer (Pipistrellus sp.)

**Key**

Site boundary

Proposed turbines

**Bat passes per hour**

< 0.012

0.012

> 0.012

**Median passes per hour**

< 1

1

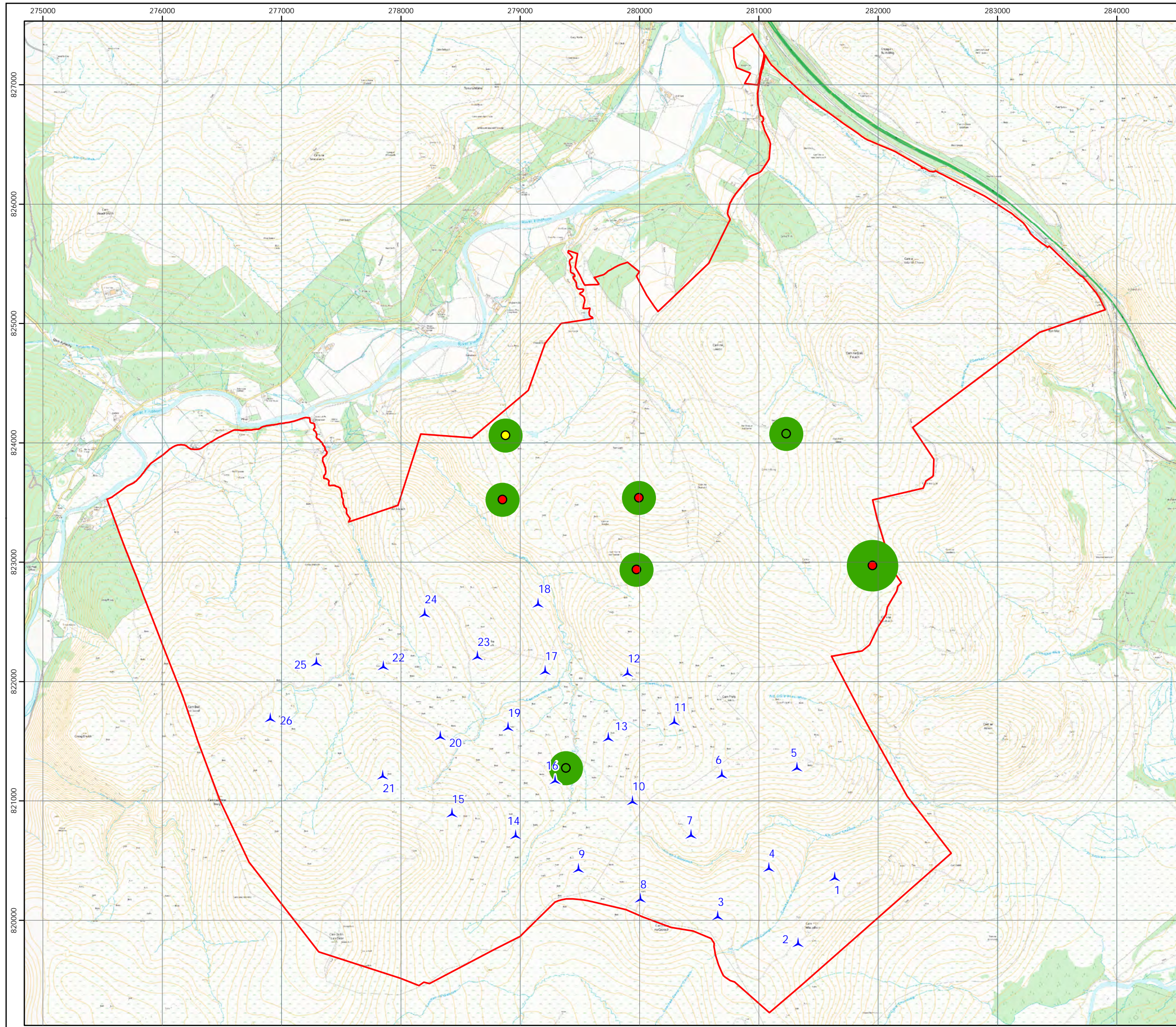
> 1



Scale @ A3:  
1:30,000



© Crown copyright 2024. All rights reserved.  
Ordnance survey licence number 100031673.





# Clune Wind Farm



Figure 7.2.5a  
Bat Activity Survey Results  
Autumn (Myotis sp.)

### Key

- Site boundary
- ▲ Proposed turbines

### Bat passes per hour

- < 0.012
- 0.012
- > 0.012

### Median passes per hour

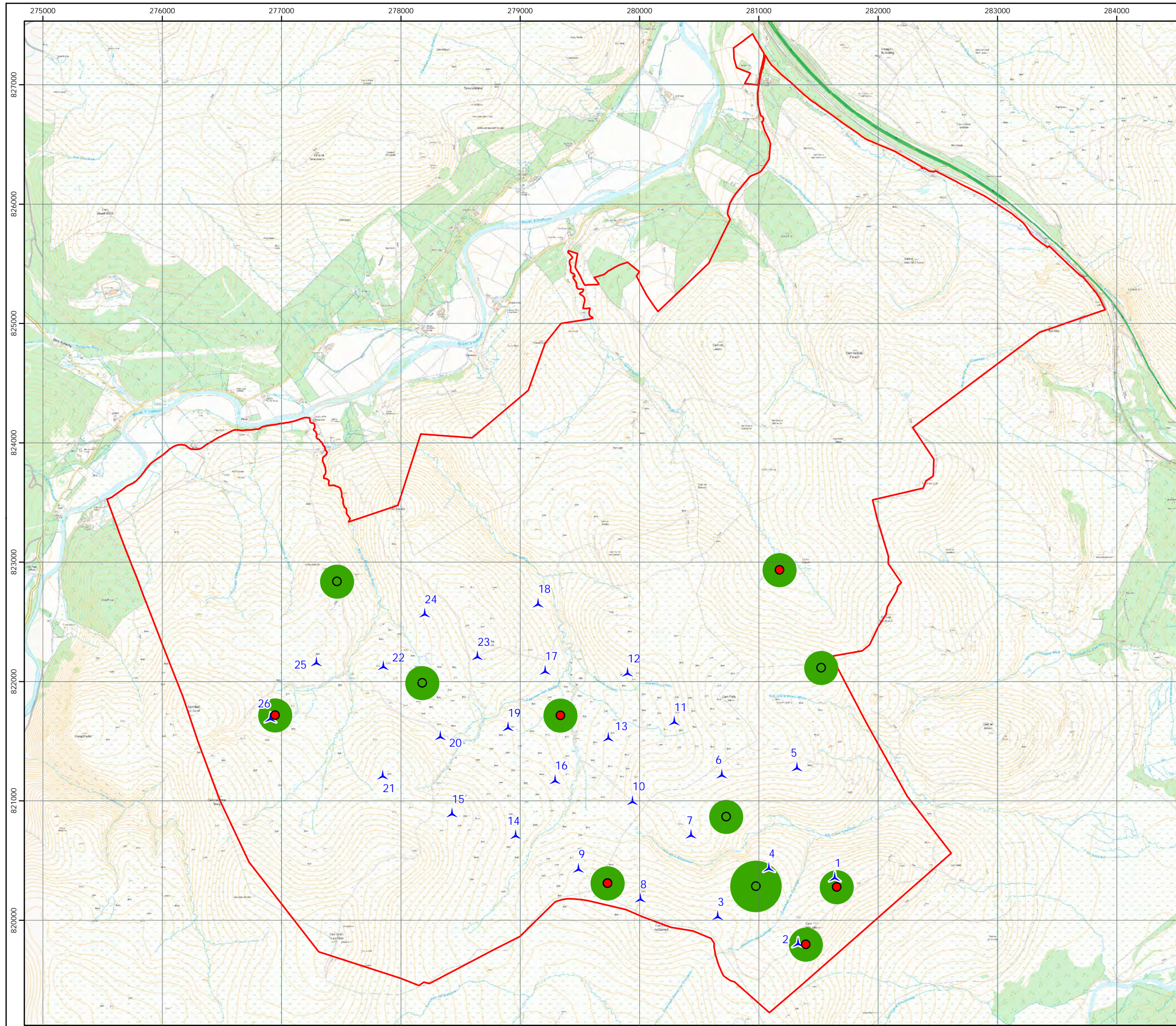
- < 1
- 1
- > 1



Scale @ A3:  
1:30,000



© Crown copyright 2024. All rights reserved.  
Ordnance survey licence number 100031673.





# Clune Wind Farm



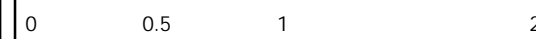
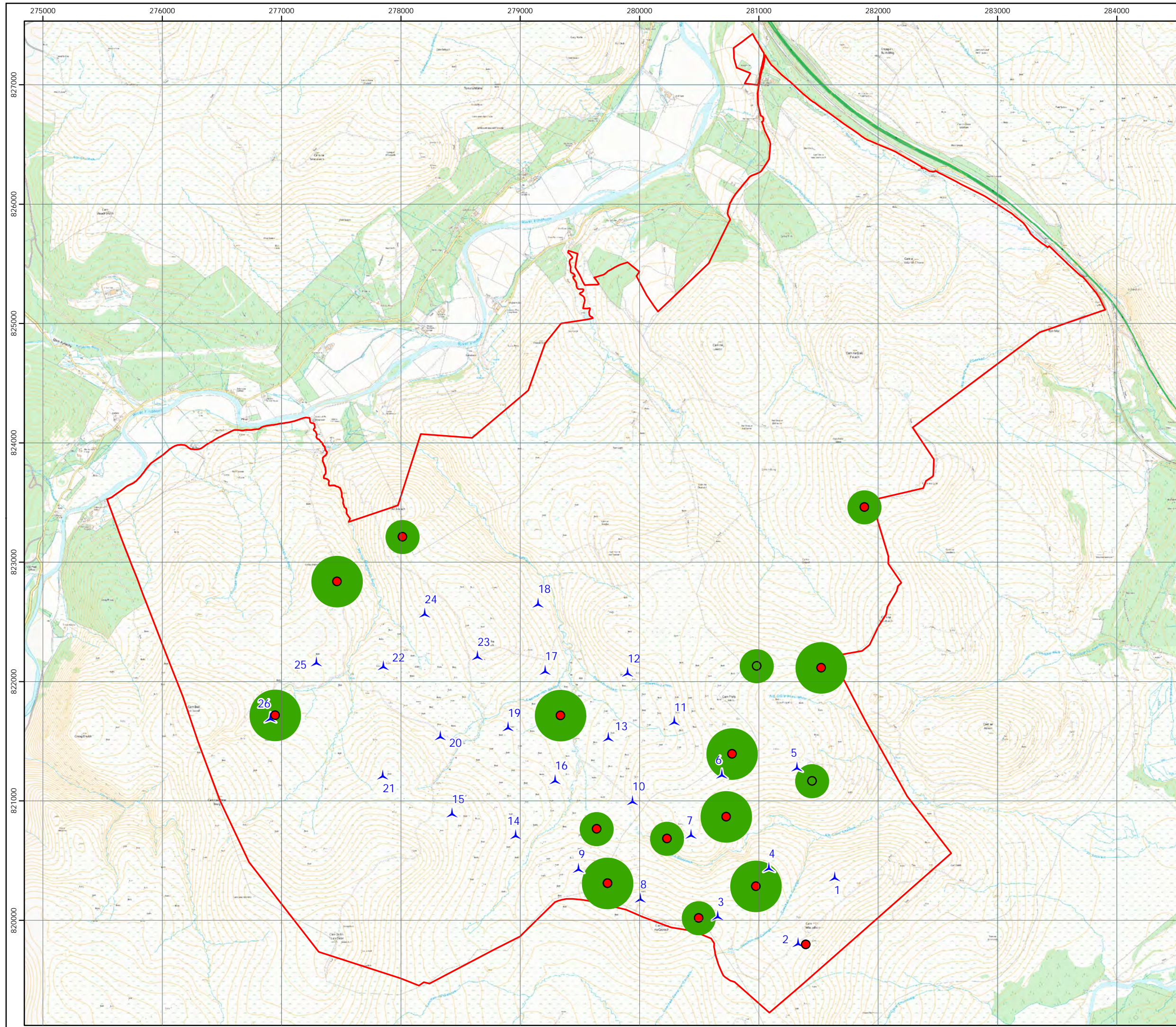
Figure 7.2.5b  
Bat Activity Survey Results  
Autumn (Common Pipistrelle)

**Key**

- Site boundary
- ▲ Proposed turbines
- Bat passes per hour**
- < 0.012
- 0.012
- > 0.012

**Median passes per hour**

- < 1
- 1
- > 1



Scale @ A3:  
1:30,000



© Crown copyright 2024. All rights reserved.  
Ordnance survey licence number 100031673.



# Clune Wind Farm



Figure 7.2.5c  
Bat Activity Survey Results  
Autumn (Soprano Pipistrelle)

**Key**

Site boundary

Proposed turbines

**Bat passes per hour**

< 0.012

0.012

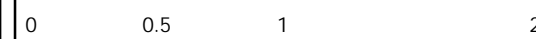
> 0.012

**Median passes per hour**

< 1

1

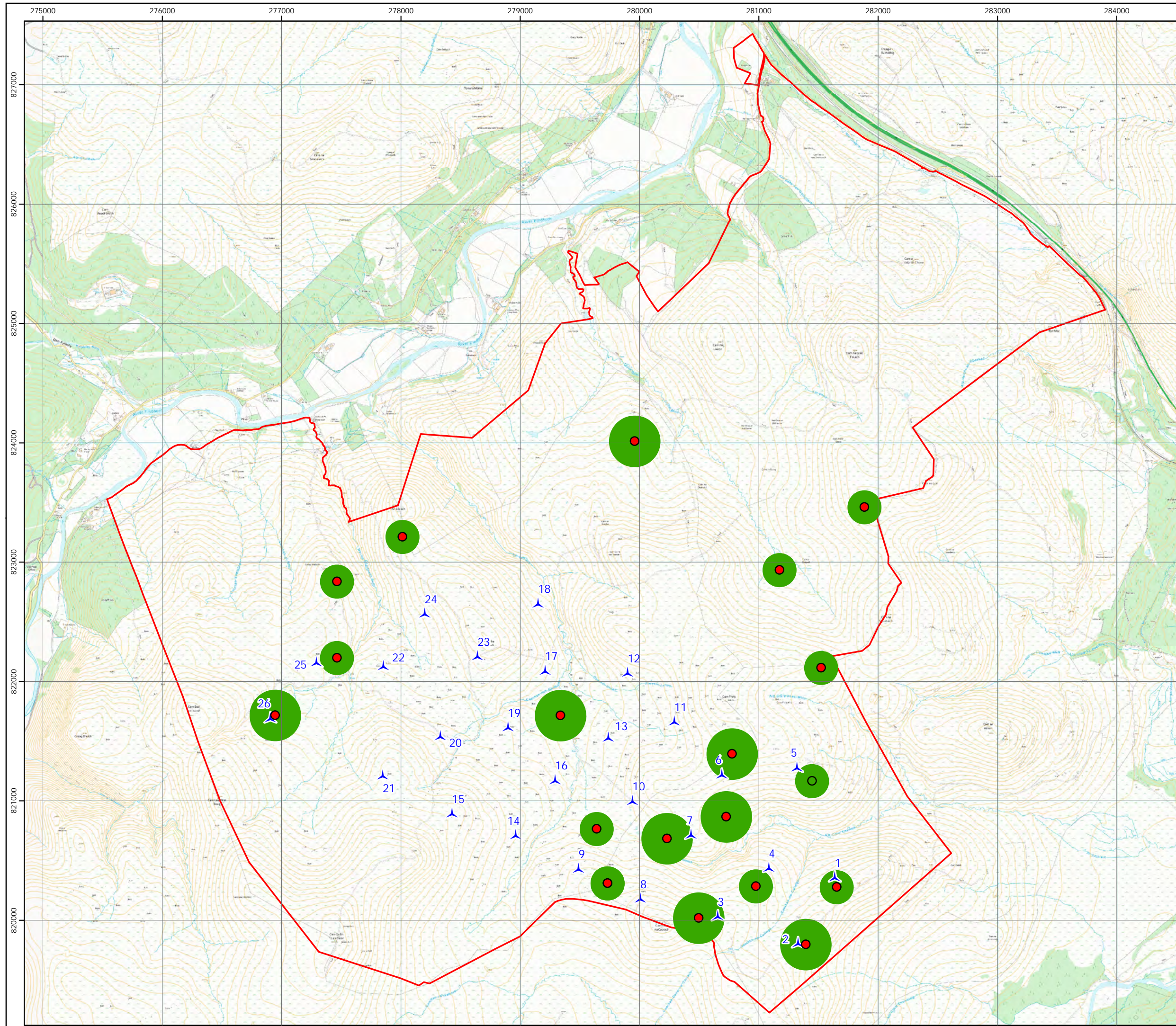
> 1



Scale @ A3:  
1:30,000



© Crown copyright 2024. All rights reserved.  
Ordnance survey licence number 100031673.





# Clune Wind Farm



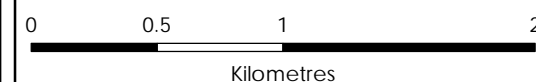
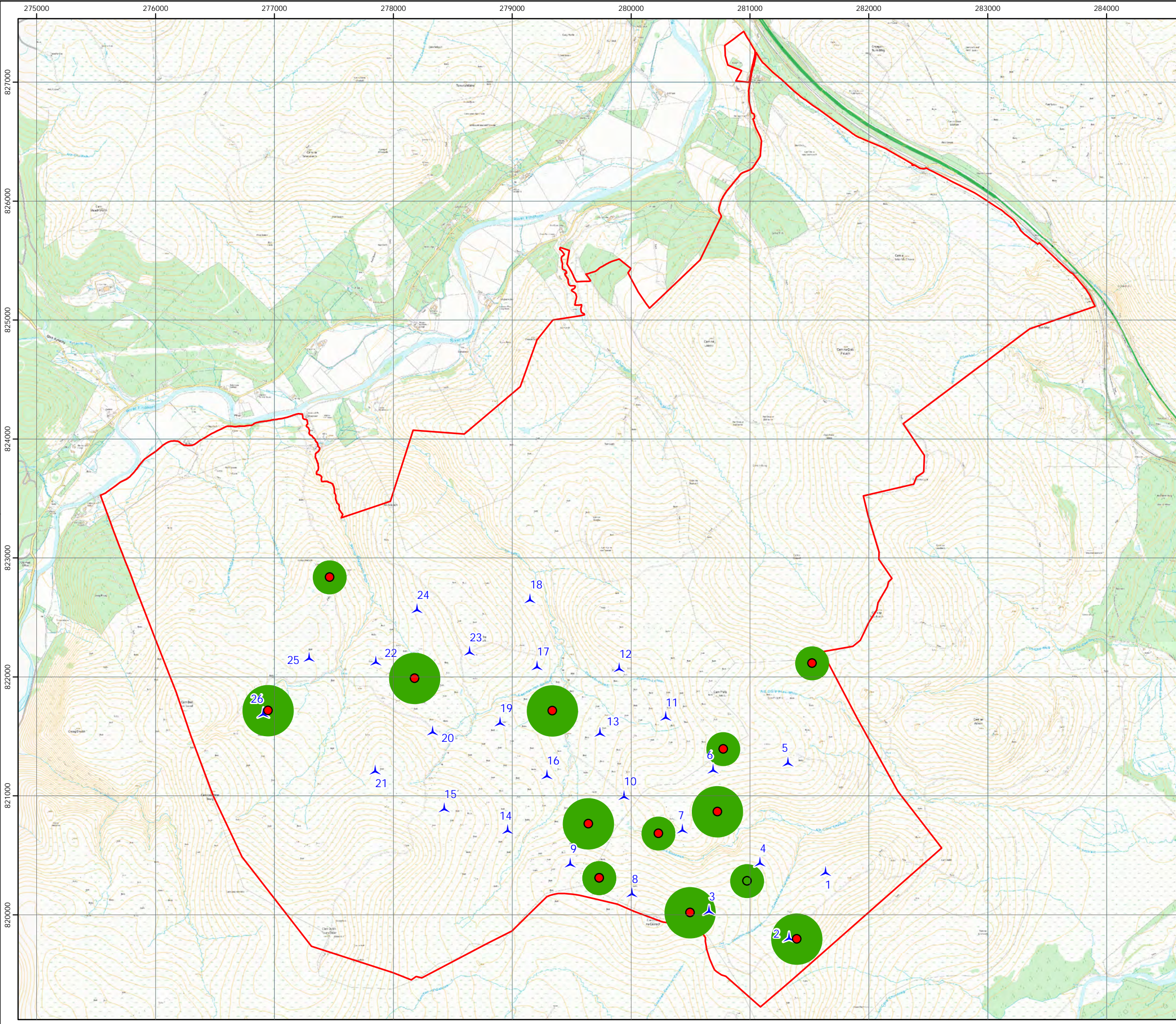
Figure 7.2.5d  
Bat Activity Survey Results  
Autumn (Pipistrellus sp.)

**Key**

- Site boundary
- ▲ Proposed turbines
- Bat passes per hour**
- < 0.012
- 0.012
- > 0.012

**Median passes per hour**

- < 1
- 1
- > 1



Scale @ A3:  
1:30,000



© Crown copyright 2024. All rights reserved.  
Ordnance survey licence number 100031673.