

**CLUNE WIND FARM
EIA REPORT
FIGURE 5.26
Viewpoint Plan
VP10: Track near Geal
Charn Mor
LVIA**

Reproduced from Ordnance Survey digital data © Crown copyright and database rights 2025. All rights reserved. License number AC000808122. Contains public sector information licensed under the Open Government Licence v3.0. Maxar, Microsoft

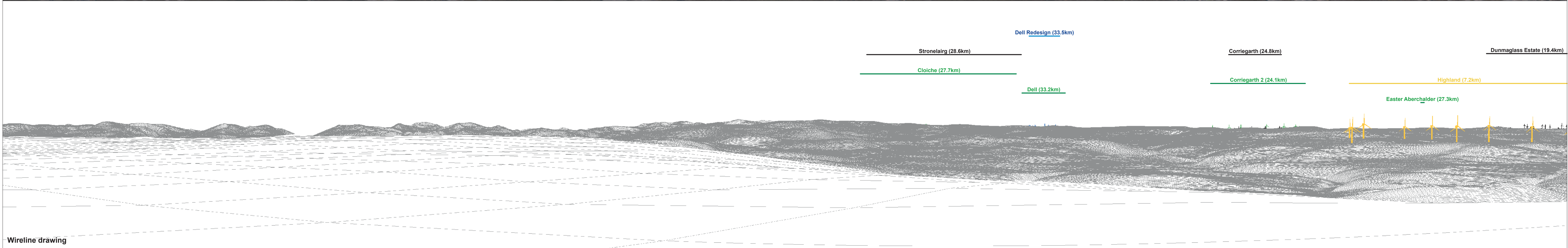
- Proposed Turbine Location
 - ▭ Site Boundary
 - 5km Radii
 - 35km Study Area
 - ⊙ Viewpoint
- Cumulative Wind Turbines
- Operational
 - Under Construction
 - Consented
 - Appeal / Application
 - Scoping
- ▭ Cairngorms National Park
 - ▭ Council Boundary
 - ▭ Photomontage and Wireline (53.5° HFOV)
 - ▭ Panorama with Wireline (90° HFOV)
- Number of Blade Tips Theoretically Visible
- 1 - 5
 - 6 - 10
 - 11 - 16
 - 17 - 23
 - 24 - 26
- LAYOUT OWN: TBC | LAYOUT NO: PSC00LU041

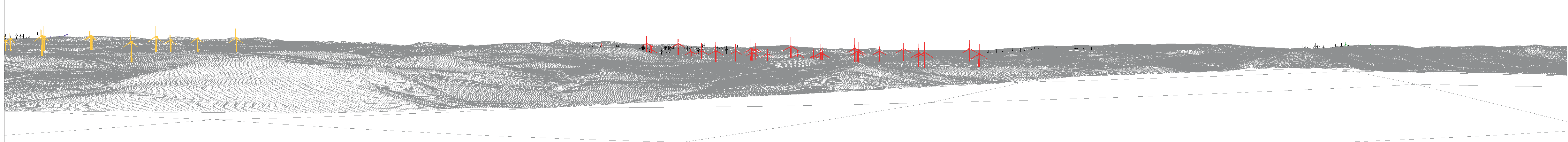
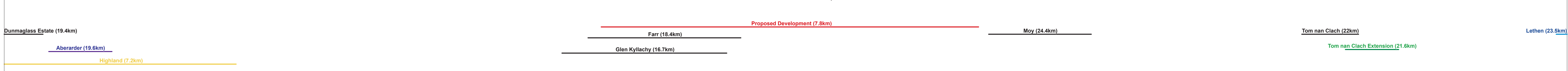
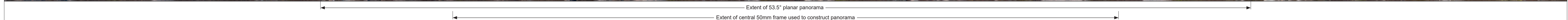
DRAWING NUMBER:
405.064807.00001.0072.0

**ENVIRONMENTAL IMPACT ASSESSMENT
REPORT 2025**

THIS DRAWING IS THE PROPERTY OF RENEWABLE ENERGY SYSTEMS LTD. AND NO REPRODUCTION MAY BE MADE IN WHOLE OR IN PART WITHOUT PERMISSION

Blade Tip:	200m	Observer height:	2m
DTM:	OS 150 DTM	Surface features:	Excluded
DTM resolution:	50m	Earth curvature:	Included



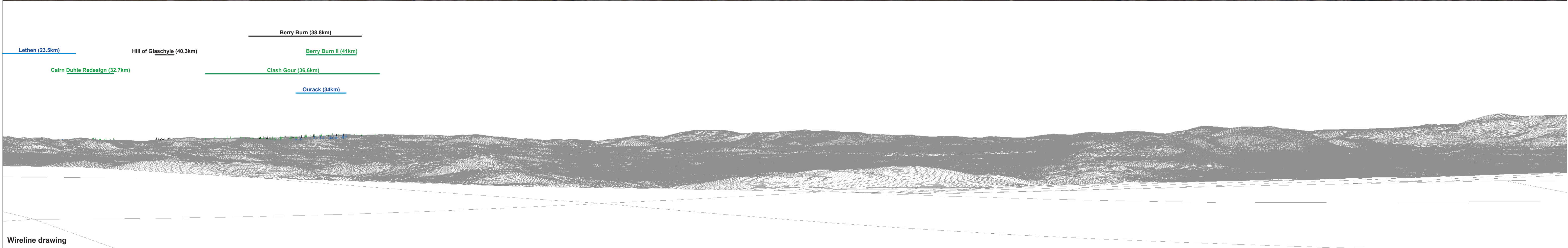


Wireline drawing



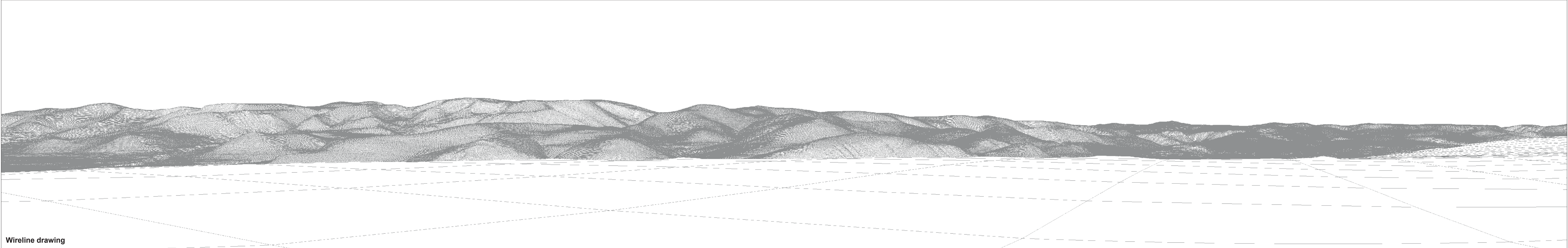
Baseline photograph

This image provides landscape and visual context only



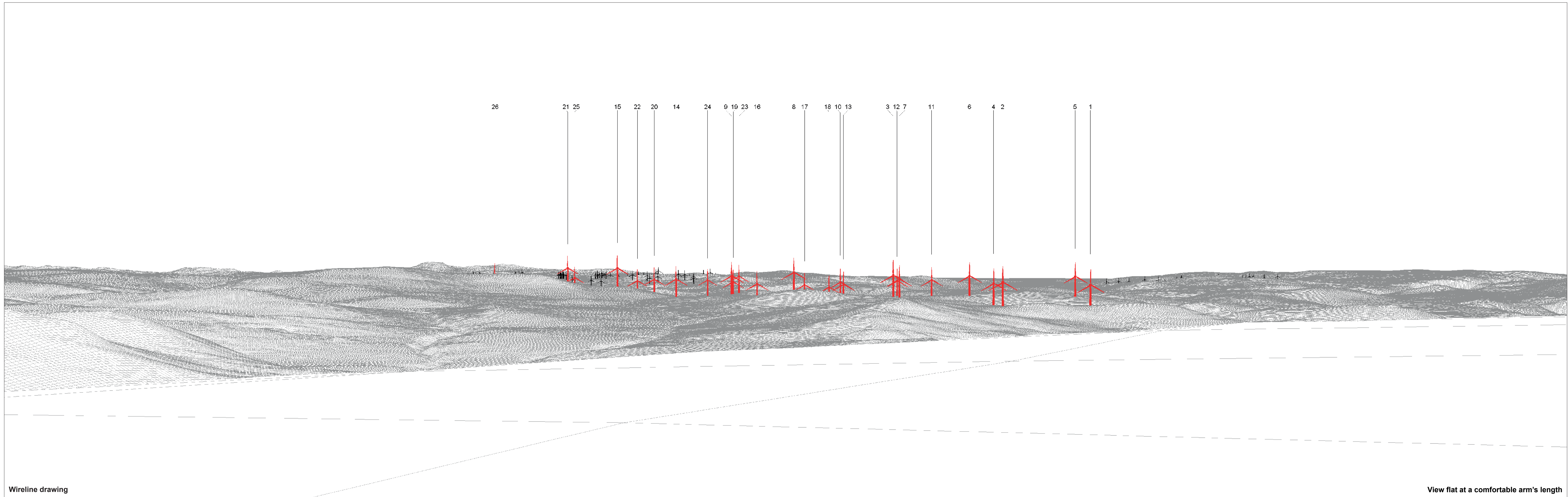
Wireline drawing

Figure: 5.26.d
Viewpoint 10: Track near Geal Charn Mor



OS reference: 283626 E 812320 N	Horizontal field of view: 90° (cylindrical projection)	Camera: Canon EOS 6D Mark II	Reproduced from Ordnance Survey digital data © Crown copyright and database rights 2025. All rights reserved. Licence number AC0000808122.
Eye level: 824.84 m AOD	Principal distance: 522 mm	Lens: EF50mm f/1.4 USM	
Direction of view: 155°	Paper size: 841 x 297 mm (half A1)	Camera height: 1.5 m AGL	
Nearest turbine: 7.8 km	Correct printed image size: 820 x 130 mm	Date and time: 06/09/2024, 14:10:20	

Figure: 5.26.e
Viewpoint 10: Track near Geal Charn Mor



Wireline drawing

View flat at a comfortable arm's length

OS reference: 283626 E 812320 N
 Eye level: 824.84 m AOD
 Direction of view: 335°
 Nearest turbine: 7.8 km

Horizontal field of view: 53.5° (planar projection)
 Principal distance: 812.5 mm
 Paper size: 841 x 297 mm (half A1)
 Correct printed image size: 820 x 260 mm

Camera: Canon EOS 6D Mark II
 Lens: EF50mm f/1.4 USM
 Camera height: 1.5 m AGL
 Date and time: 06/09/2024, 14:10:20

Reproduced from Ordnance Survey digital data © Crown copyright and database rights 2025. All rights reserved. Licence number AC0000808122.

Figure: 5.26.f
 Viewpoint 10: Track near Geal Charn Mor



Baseline photograph

View flat at a comfortable arm's length

OS reference: 283626 E 812320 N	Horizontal field of view: 53.5° (planar projection)	Camera: Canon EOS 6D Mark II	Reproduced from Ordnance Survey digital data © Crown copyright and database rights 2025. All rights reserved. Licence number AC0000808122.
Eye level: 824.84 m AOD	Principal distance: 812.5 mm	Lens: EF50mm f/1.4 USM	
Direction of view: 335°	Paper size: 841 x 297 mm (half A1)	Camera height: 1.5 m AGL	
Nearest turbine: 7.8 km	Correct printed image size: 820 x 260 mm	Date and time: 06/09/2024, 14:10:20	

Figure: 5.26.g
Viewpoint 10: Track near Geal Charn Mor



Photo montage

View flat at a comfortable arm's length

OS reference: 283626 E 812320 N	Horizontal field of view: 53.5° (planar projection)	Camera: Canon EOS 6D Mark II	Reproduced from Ordnance Survey digital data © Crown copyright and database rights 2025. All rights reserved. Licence number AC0000808122.
Eye level: 824.84 m AOD	Principal distance: 812.5 mm	Lens: EF50mm f/1.4 USM	
Direction of view: 335°	Paper size: 841 x 297 mm (half A1)	Camera height: 1.5 m AGL	
Nearest turbine: 7.8 km	Correct printed image size: 820 x 260 mm	Date and time: 06/09/2024, 14:10:20	

Figure: 5.26.h
Viewpoint 10: Track near Geal Charn Mor