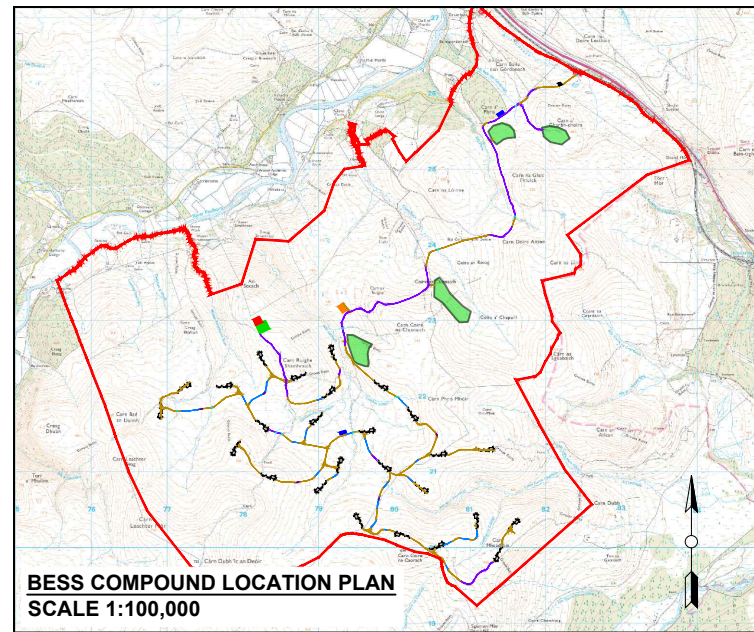
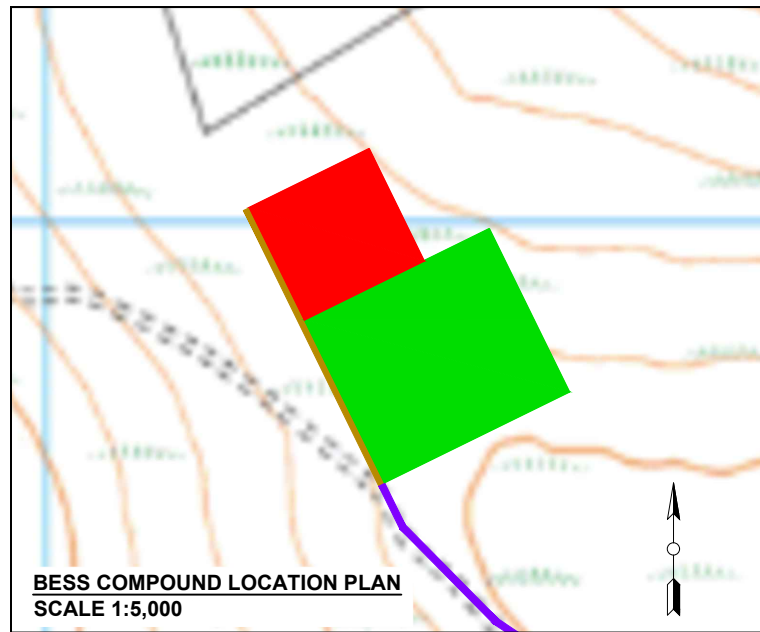


CLUNE WIND FARM

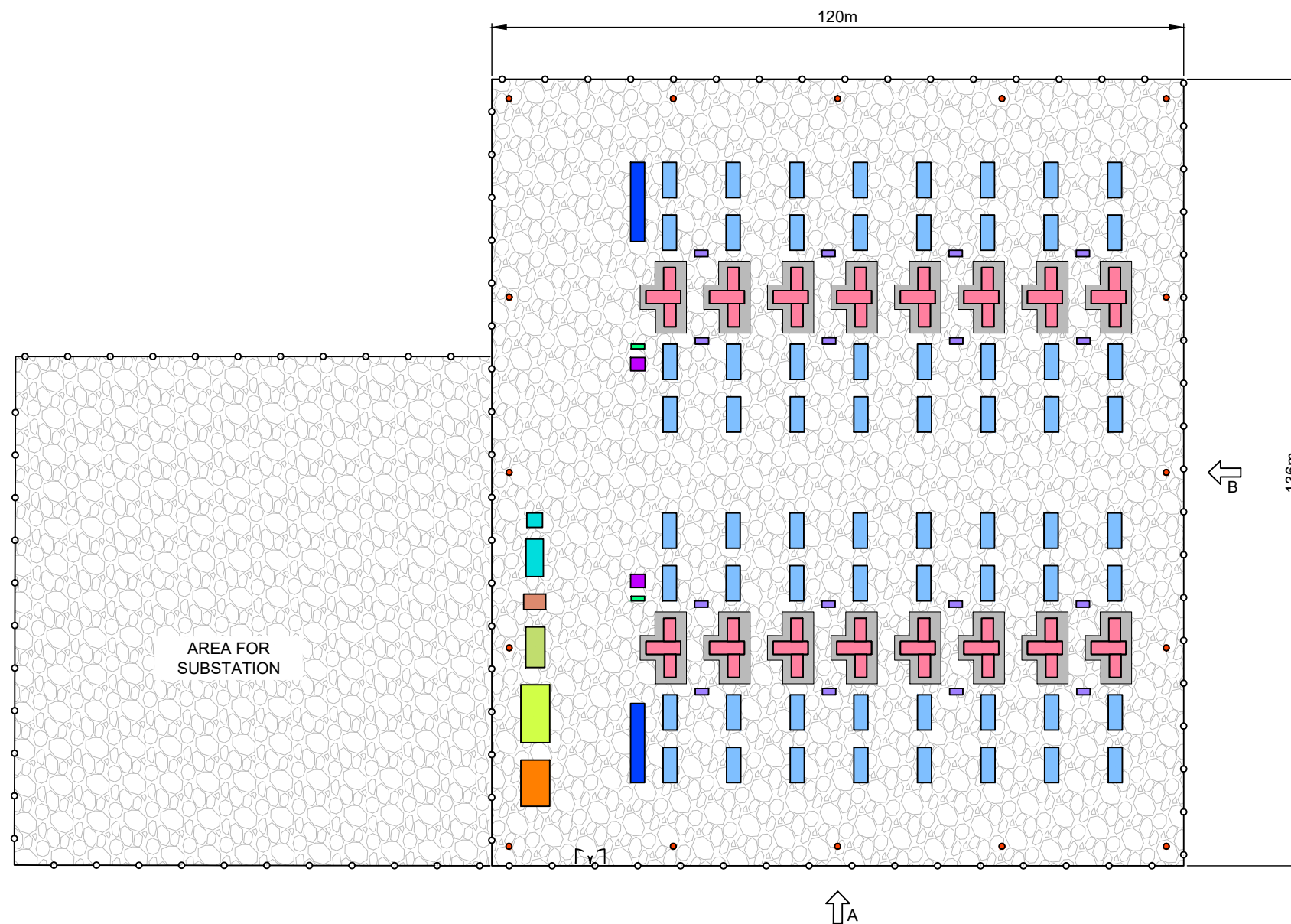
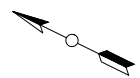
FIGURE 3.11a

INDICATIVE BATTERY ENERGY STORAGE SYSTEM COMPOUND LAYOUT



NOTES:

1. EQUIPMENT DETAILS AND CONFIGURATION WITHIN THE BATTERY ENERGY STORAGE COMPOUND ARE INDICATIVE AND SUBJECT TO CHANGE DURING DETAILED DESIGN.
2. AREA INDICATED IN THE LAYOUT INFRASTRUCTURE DRAWING FOR BESS IS LARGER THAN TYPICAL BESS STORAGE COMPOUND LAYOUT TO ALLOW FOR DRAINAGE.



KEY:

- PALISADE, WELDMESH OR ACOUSTIC FENCE
- BATTERY STORAGE ENCLOSURE (BSE)
- 2 No. POWER CONVERSION SYSTEMS (PCS) WITH TWIN MV SKID AND APRON SLAB
- BESS SUBSTATION BUILDING
- DNO SUBSTATION BUILDING
- AUXILIARY TRANSFORMER
- LV DISTRIBUTION EQUIPMENT
- AGGREGATION PANEL WITH LV PILLAR
- PRE-INSERTION RESISTOR
- CAPACITOR BANK
- HARMONIC FILTER AND RESISTOR
- SPARES CONTAINER
- LIGHTING / CCTV COLUMN
- GRAVEL OR ASPHALT FINISH TO SUIT DETAILED EARTHING DESIGN.

LAYOUT DWG	N/A	T-LAYOUT NO.	N/A
------------	-----	--------------	-----

DRAWING NUMBER	04707-RES-LAY-DR-PT-001	REV	1
----------------	-------------------------	-----	---

SCALE - 1:1000 @ A3

ENVIRONMENTAL IMPACT ASSESSMENT REPORT 2024

THIS DRAWING IS THE PROPERTY OF RENEWABLE ENERGY SYSTEMS LTD. AND NO REPRODUCTION MAY BE MADE IN WHOLE OR IN PART WITHOUT PERMISSION