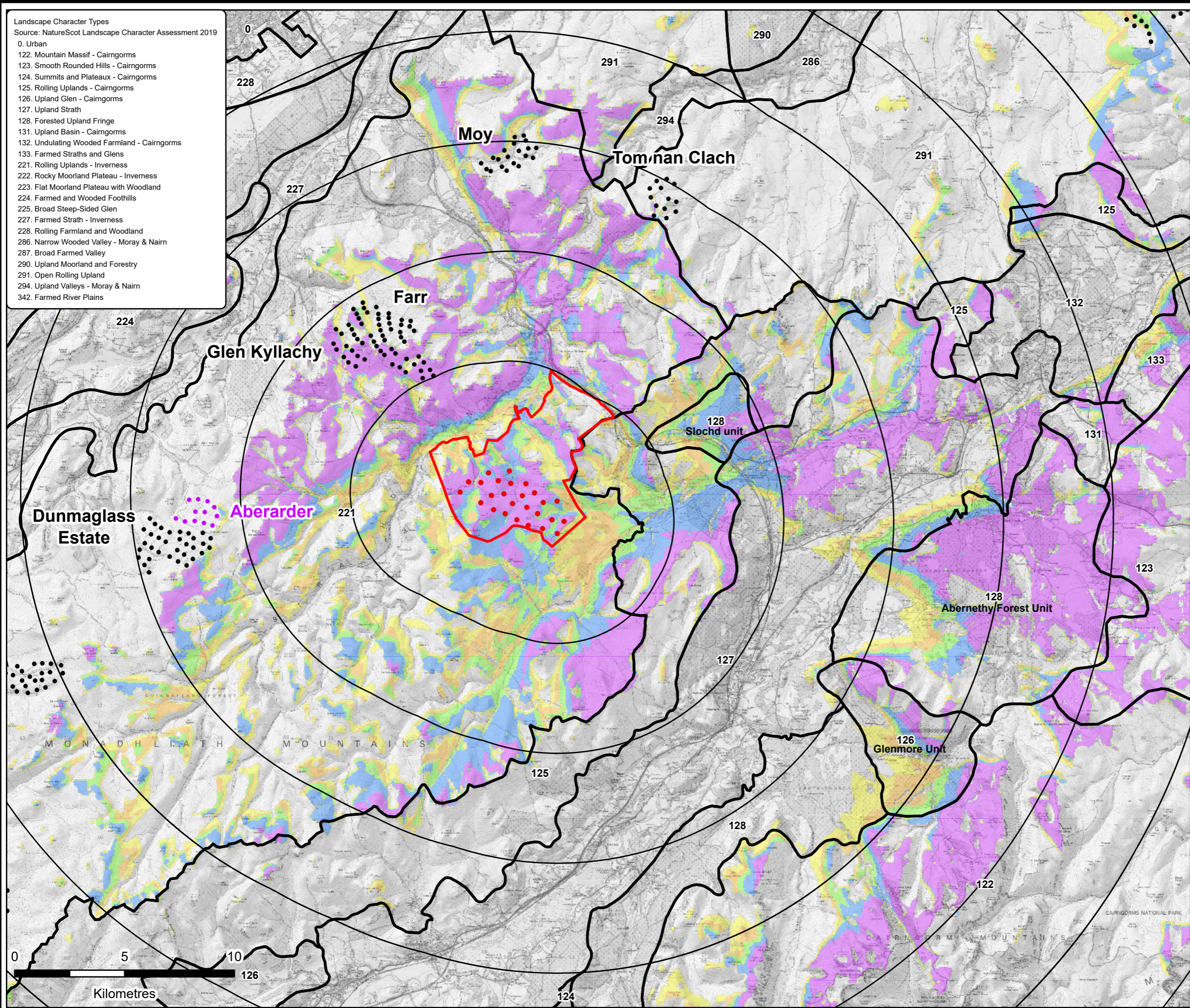


- Landscape Character Types
Source: NatureScot Landscape Character Assessment 2019
- 0. Urban
 - 122. Mountain Massif - Cairngorms
 - 123. Smooth Rounded Hills - Cairngorms
 - 124. Summits and Plateaux - Cairngorms
 - 125. Rolling Uplands - Cairngorms
 - 126. Upland Glen - Cairngorms
 - 127. Upland Strath
 - 128. Forested Upland Fringe
 - 131. Upland Basin - Cairngorms
 - 132. Undulating Wooded Farmland - Cairngorms
 - 133. Farmed Straths and Glens
 - 221. Rolling Uplands - Inverness
 - 222. Rocky Moorland Plateau - Inverness
 - 223. Flat Moorland Plateau with Woodland
 - 224. Farmed and Wooded Foothills
 - 225. Broad Steep-Sided Glen
 - 227. Farmed Strath - Inverness
 - 228. Rolling Farmland and Woodland
 - 286. Narrow Wooded Valley - Moray & Nairn
 - 287. Broad Farmed Valley
 - 290. Upland Moorland and Forestry
 - 291. Open Rolling Upland
 - 294. Upland Valleys - Moray & Nairn
 - 342. Farmed River Plains



**CLUNE WIND FARM
EIA REPORT**

**FIGURE 5.9b
Landscape Character
with ZTV**

LVIA

Reproduced from Ordnance Survey digital data © Crown copyright and database rights 2025. All rights reserved. License number AC0000808122. Contains public sector information licensed under the Open Government Licence v3.0. Contains NatureScot information licensed under the Open Government Licence v3.0.

- Proposed Turbine Location
 - Site Boundary
 - 5km Radii
 - Landscape Character
- Cumulative Wind Turbine Status
- Operational
 - Under Construction
- Number of Blade Tips Theoretically Visible
- 1 - 5
 - 6 - 10
 - 11 - 16
 - 17 - 23
 - 24 - 26

Blade Tip:	200m	Observer height:	2m
DTM:	OS T50 DTM	Surface features:	Excluded
DTM resolution:	50m	Earth curvature:	Included



LAYOUT DWG: TBC T-LAYOUT NO.: PSCOCLU041

DRAWING NUMBER: **405.064807.00001.0061.1**

SCALE - 1:170,000@ A3

**ENVIRONMENTAL IMPACT ASSESSMENT
REPORT 2025**

THIS DRAWING IS THE PROPERTY OF RENEWABLE ENERGY SYSTEMS LTD. AND NO REPRODUCTION MAY BE MADE IN WHOLE OR IN PART WITHOUT PERMISSION