



CLUNE WIND FARM EIA REPORT

FIGURE 6.3 CULTURAL HERITAGE VIEWPOINTS

Note

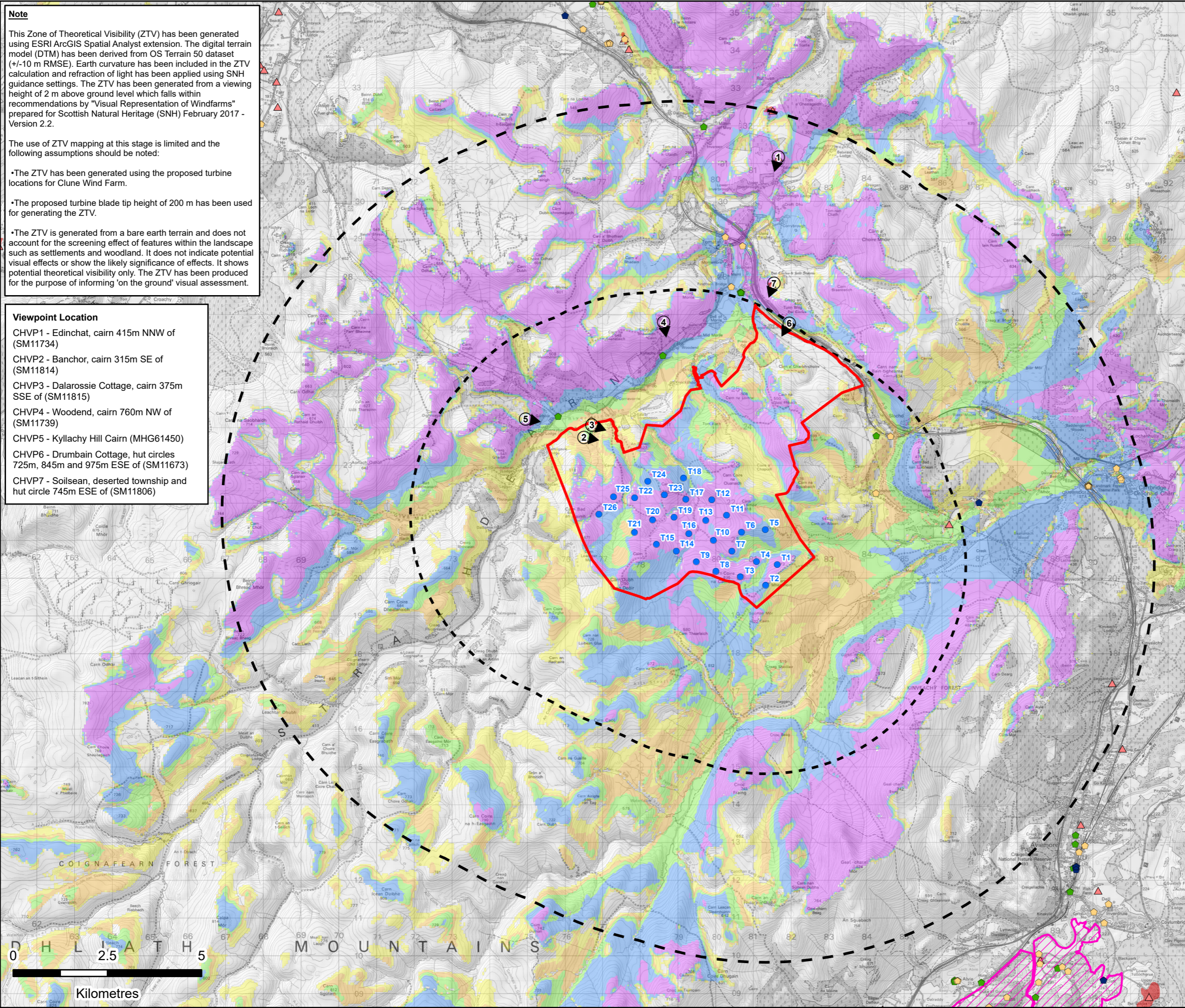
This Zone of Theoretical Visibility (ZTV) has been generated using ESRI ArcGIS Spatial Analyst extension. The digital terrain model (DTM) has been derived from OS Terrain 50 dataset (+/-10 m RMSE). Earth curvature has been included in the ZTV calculation and refraction of light has been applied using SNH guidance settings. The ZTV has been generated from a viewing height of 2 m above ground level which falls within recommendations by "Visual Representation of Windfarms" prepared for Scottish Natural Heritage (SNH) February 2017 - Version 2.2.

The use of ZTV mapping at this stage is limited and the following assumptions should be noted:

- The ZTV has been generated using the proposed turbine locations for Clune Wind Farm.
- The proposed turbine blade tip height of 200 m has been used for generating the ZTV.
- The ZTV is generated from a bare earth terrain and does not account for the screening effect of features within the landscape such as settlements and woodland. It does not indicate potential visual effects or show the likely significance of effects. It shows potential theoretical visibility only. The ZTV has been produced for the purpose of informing 'on the ground' visual assessment.

Viewpoint Location

- CHVP1 - Edinchat, cairn 415m NNW of (SM11734)
- CHVP2 - Banchor, cairn 315m SE of (SM11814)
- CHVP3 - Dalarossie Cottage, cairn 375m SSE of (SM11815)
- CHVP4 - Woodend, cairn 760m NW of (SM11739)
- CHVP5 - Kyllachy Hill Cairn (MHG61450)
- CHVP6 - Drumbain Cottage, hut circles 725m, 845m and 975m ESE of (SM11673)
- CHVP7 - Soilsean, deserted township and hut circle 745m ESE of (SM11806)



Reproduced from Ordnance Survey digital data © Crown copyright and database rights 2025. All rights reserved. License number AC000808122.

Contains Data from © Historic Environment Scotland. Contains Ordnance Survey data © Crown copyright and database right 2024.

- Site Boundary
- Proposed Turbine Location
- Proposed Turbine Locations 5 km Buffer
- Proposed Turbine Locations 10 km Buffer
- Listed Building (Category)**
 - A
 - B
 - C
 - Scheduled Monument (Centre Point)
 - Scheduled Monument
 - Inventory Garden and Designed Landscape
 - Viewpoint Location
- Zone of Theoretical Visibility (Bare Earth):
Number of Turbine Blade Tips Visible**
 - 1 - 5
 - 6 - 10
 - 11 - 16
 - 17 - 23
 - 24 - 26



LAYOUT DWG: NA T-LAYOUT NO: PSCOCLU041

DRAWING NUMBER: **405.064807.00001.0045.1**

SCALE - 1:100,000@ A3

**ENVIRONMENTAL IMPACT ASSESSMENT
REPORT 2025**

THIS DRAWING IS THE PROPERTY OF RENEWABLE ENERGY SYSTEMS LTD. AND NO REPRODUCTION MAY BE MADE IN WHOLE OR IN PART WITHOUT PERMISSION