

Maximising the local benefit

A power for good

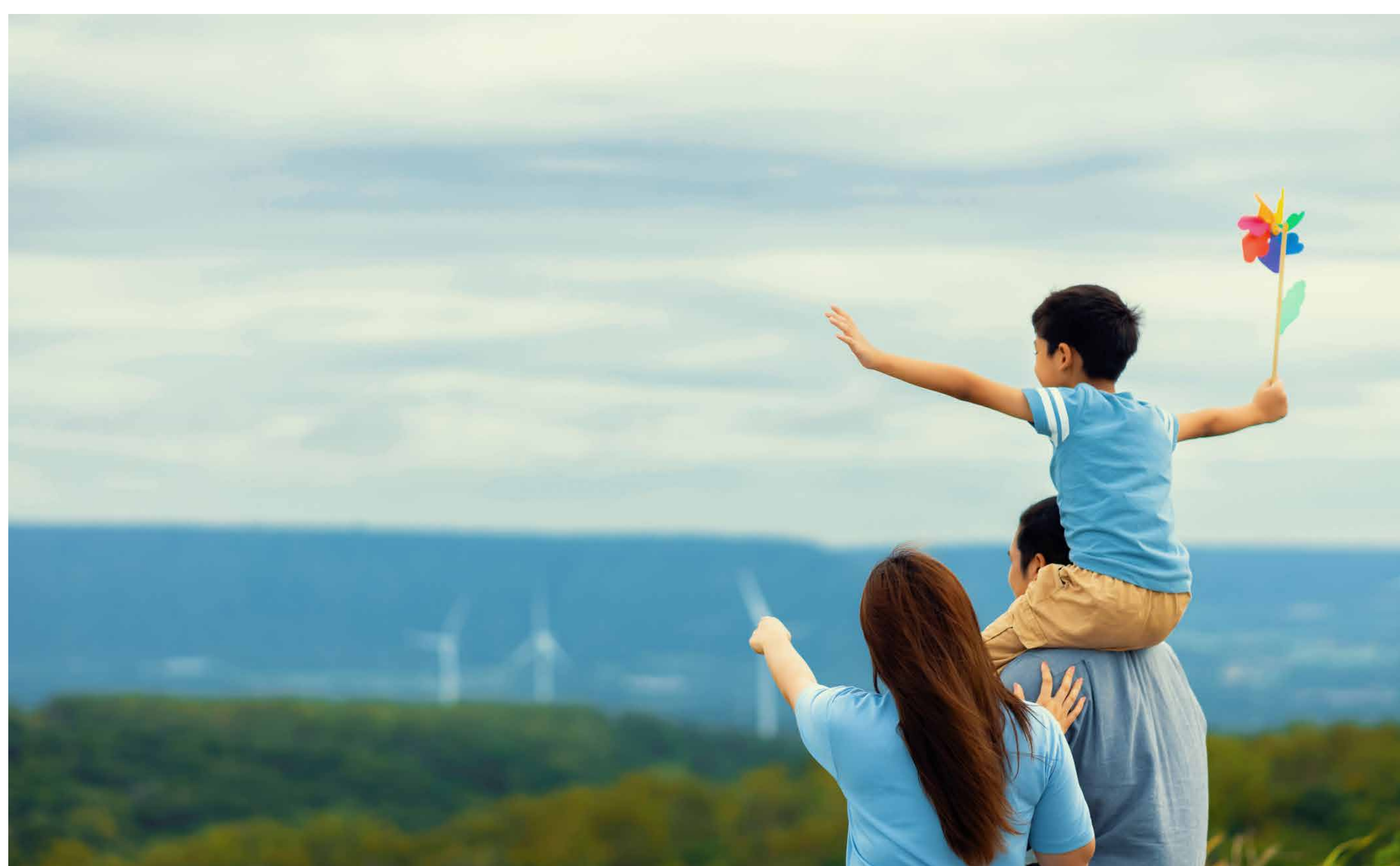
RES seeks to be a power for good in communities that neighbour our projects by working openly and constructively to ensure tangible local benefits. We believe that onshore wind should provide direct, lasting benefits to local communities and there are a number of ways that this can be achieved.

Recreational access

RES is exploring enhancement proposals to increase recreational access within the area. We are proposing the provision of parking spaces at the site entrance to link up to a network of already established footpaths that will form a signposted trail throughout the site.

Once operational, the wind farm tracks will be opened up to increase access to the countryside. We are also exploring other opportunities to promote recreational access to the site for other users, such as cyclists. We would welcome your feedback on this.

Parts of the site are used for farming operations and shooting, and it is crucial that our plans do not impact current land users, and so responsible access will be promoted throughout the site.



Tailored community benefits package

We are committed to a community benefits package that would be worth £5,000 per megawatt (or equivalent) of installed capacity per annum. Based on the current layout design and installed capacity of 187.2MW this could equate to a tailored community benefit package of £936,000 (index linked) each year, which over a 40-year operational lifetime would mean in excess of £37 million for the local area.

The Clune community benefits package could include RES' unique Local Electricity Discount Scheme (LEDS), something that has received interest from the local community following the first public exhibition events earlier this year.



LEDS offers an annual discount to the electricity bills of those properties closest to a participating wind farm and there is no need to change energy provider.

Please let us know what ideas you have for local benefits and priority projects that you would like to see supported or delivered in your community from the Clune Wind Farm project, should it receive consent.

In late June 2024, The Highland Council brought forward a report on the Social Values Charter, which we understand aims to embed an approach to community wealth building into the Highlands and maximise economic benefits from the natural environment and resources, including from wind farms. Scottish Renewables, on behalf of the renewables industry, is currently in discussions with The Highland Council on the Charter.

Clune Wind Farm - updated proposal

www.clune-windfarm.co.uk

RES
power for good